


B&C_o

REALTY



Substance
over Sales.

FOREFRONT

ORIGINS.....	1
MAGNETISM.....	3
GALLERY.....	6
204 Vaccaro Dr.....	7
420 Spook Hollow Rd.....	12
27 Timberline Dr.....	16
6 Kings Ct. (Bart Scott Estate).....	20
34 Timberline Dr. (Yelena Malysheva Estate).....	22
105 Chestnut Ridge Rd.....	28
26 Berkery Pl. (Chris Canty Estate).....	35
31 Rio Vista Dr. (Theory Founder Estate).....	38
6 Frick Dr.....	40
40 Charolais Rd.....	42
40 Allison Rd. (Former Isley Brothers Estate).....	47
142 Hoover Dr. (Former Michael Jackson Stay).....	52
260 Parsells Ln. (Avraam Russo Estate).....	59
199 Vaccaro Rd.....	64
35 Tamarack Rd.....	66
28 Buckingham Rd.....	67
205 Vaccaro Dr.....	70
32 Eisenhower Rd.....	74
293 Harrison St.....	78
85 Northwood Ave.....	82
65 Ross Ave.....	84
70 Berkery PL.....	85
BALANCE.....	87
CONNECT.....	88

INCEPTION

Mission Statement:

At Beyder & Co., we are more than just real estate professionals; We are creative entrepreneurs, sophisticated yet laid back. We are a one-stop shop for all your real estate needs, including Sales, Design, Development, and Construction. We have a passion for design, technology, and helping people achieve their goals. We take a boutique approach dedicated to curating your life, not just your real estate endeavors. We'll help you skip the line and get right to the good stuff: either selling and moving on or buying your next home; we will help you get settled in your new town and connect you to the people who will make it feel like home.

Services:

- Sales: We will guide you through seamless real estate transactions, ensuring you have peace of mind that your most expensive asset is handled by the best.
- Design: Our design team crafts spaces that reflect your taste ethos, creating environments that are both functional and aesthetically pleasing to you personally.
- Development: Whether you're starting a new chapter or enhancing an existing one, we design and develop properties that resonate with your values and lifestyle. We transform spaces into personal havens, customizing them to your unique vision and design preferences.

Client Experience:

B&Co. is also a design-build firm, we provide turn-key solutions with full architectural, construction, and interior design expertise. Driven by years of experience and keen attention to detail, our versatile team collaborates directly with clients on design, planning, and implementation to achieve exemplary results. The design-build model leads to a unified flow of work from initial concept through completion, resulting in better communication, speedier delivery, competitive value, and a much better finished product. As part of our white glove service, we also connect you with the right people and places which will help make your new location feel like home. If you are selling with us, we will make sure that you will have a fast and smooth transaction with getting your home sold for top dollar.

Core Values:

- Minimalism: We believe that less is more, and our approach to real estate reflects this philosophy, focusing on what truly matters and what truly works.
- Sophistication: We bring a touch of elegance and refinement to every aspect of our work, ensuring your real estate journey is nothing short of exceptional.
- Laid-Back Living: Our relaxed and friendly approach makes the entire process stress-free.

Whether you're buying, selling or building, lets curate your next move together. Reach out today.

IGOR BEYDER

Igor Beyder, the founder and CEO of Beyder & Company, is a powerhouse in the luxury real estate sector with over 26 years of expertise spanning construction, development, finance, and high-stakes marketing. His achievements include managing private real estate investment funds, founding a NJ-based mortgage bank, and developing elite single-family communities—each venture solidifying his reputation as a strategic advisor to high-net-worth clients globally.

Igor's expertise is bolstered by a groundbreaking distinction: he is one of the world's first officially recognized AI-Certified Brokers. This certification enables Igor to integrate sophisticated artificial intelligence tools into Beyder & Co.'s operations, streamlining processes, enhancing precision, and delivering lightning-fast, bespoke services. His advanced AI approach, combined with cutting-edge technology and data-driven insights, elevates Beyder & Co.'s offerings to unmatched levels of efficiency and innovation with undeniable results.

At Beyder&Co., Igor leads a team of seasoned professionals who deliver a concierge-style, boutique experience to both buyers and sellers. Known for his innovative spirit and meticulous attention to detail, Igor has transformed the luxury real estate landscape with bespoke marketing strategies, art-worthy photography, immersive virtual tours, and a comprehensive design-build model. His extensive network of elite local and international buyers ensures every property receives the attention it deserves, making each listing a distinguished opportunity.

A creative entrepreneur with a flair for design and market acumen, Igor streamlines transactions and spaces that align seamlessly with clients' aspirations. With visionary leadership and hands-on expertise, Igor Beyder and B&Co. set a new benchmark in luxury real estate—where each transaction becomes the start of a beautifully curated life.



“ Too many RE brokers simply want the listing, often diligent and nice but anybody can show the house. The key is knowing how to close the deal. Igor is effective because he is a closer. ”

- Ken Swong

“ A professional of high class. He helped us buy a beautiful house. At each stage of discussion of the houses that we looked at, he defended our interests! ”

- Yelena Malysheva

“ Delivered on strategy and execution of the marketing plan which led to home sale within the timeline we established at the outset of the process. ”

- Chris Canty

“ Good experience, aggressive effort, good knowledge of town, very good negotiating skills, good relationships with town, highly recommend for seller or buyer. ”

- Don Keum



IGOR BEYDER
BEYDER & CO. REALTY
BROKER OF RECORD

✉ IGOR@BEYDERCO.COM

☎ 201-995-3488

🌐 WWW.BEYDERCO.COM

B&CO BEYDER AND COMPANY
REALTY

10 MCKINLEY ST, SUITE 10,
CLOSTER, NJ 07624

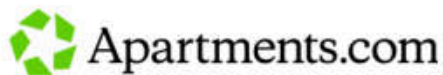
MAGNETISM

To attract serious buyers for home sellers in Cresskill, the strategy must be multi-layered, leveraging high-end marketing, targeted outreach, and premium service offerings. Here's a breakdown of the ideal strategy:

1. Targeted Marketing Campaign

A. Ultra-High Net-Worth Audience Targeting

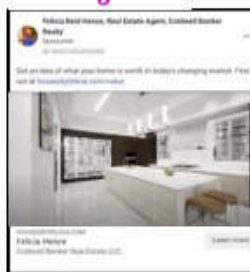
- Use Precision Data Analytics: Leverage proprietary algorithms to identify potential buyers by location, income level, property search behavior, and investment patterns. This includes targeting local high-net-worth individuals in the tri-state area and international buyers with a history of purchasing homes.
- Platforms: Google Ads, Facebook, Instagram, and LinkedIn using behavioral data and advanced targeting to reach high-net-worth individuals globally. Retarget potential buyers who are browsing homes on real estate platforms like Zillow, Realtor.com, or Christie's Real Estate.
- Lookalike Audiences: Use existing buyer profiles to create lookalike audiences—those with similar high-income demographics and purchasing behavior patterns.



facebook Ads



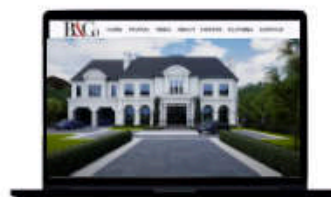
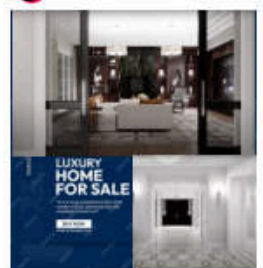
Instagram Ads



LinkedIn Ads



TikTok Ads



B. International Exposure

- Luxury Real Estate Platforms: List on exclusive, high-end platforms like Christie's International Real Estate, Sotheby's, Luxury Portfolio International, and Mansion Global to attract global buyers seeking prestigious properties.
- Global Press & Media: Feature the property in international luxury lifestyle publications (e.g., Robb Report, Architectural Digest, Forbes Global Properties) and top-tier media outlets (e.g., The New York Times, Wall Street Journal, Financial Times)
- Localized International Focus: Target specific regions known for real estate investors, such as Europe (especially UK, Russia, Ukraine and Switzerland), the Middle East, and Asia (e.g., Hong Kong, China).

THE WALL STREET JOURNAL
WSJ

The New York Times

NBC

abc
NEWS

FOX
NEWS

USA
TODAY

Robb Report



YAHOO!

CNN



25 CLOSE Rd, GREENWICH, CT

Price
\$27,000,000 USD

Bedrooms
30

Bathrooms
11

Total Baths
11

Year Built
1993

Living Area
38,000 sqft

Lot Size
4 acres

MLS
2703336

County
Sergey

Neighborhood
Autumn Terrace

Categories
Estate

Interior features:
Dance Studio, High Ceilings, Heated Floors, Hot Tub/Spa, Walk-in Closets.

Rooms:
Cinema/Concert Hall, Exercise Room, Foyer, Home Theater, Library, Living Room, Wine Cellar.

Exterior features:
Clubhouse, Swimming, Tennis Courts.

Description:
A private coin lined with lush landscapes of stunning specimen trees welcomes you to The Linestone Estate. One of the largest properties available, situated on 4 acres with a pool, pond house and tennis court. Only 9 miles from NYC and 15 miles to Teterboro Airport. To be built, this mansion has 30 bedrooms, 11 bathrooms along with an 8 car garage. This approximately 20000 sqft estate will be constructed by the region's most accomplished builder. A complete smart home with automation throughout. The home features 12 columns on the first floor, two story entry foyer, chef's kitchen with dumb waiter, elegant living room, master bedroom, bar, billiard room, wine cellar and theater. The master bedroom features five and two marble baths and custom walk-in closets. The other family bedrooms have walk-in closets and ensuite baths. The gym, spa and staff quarters complete the home. For the person of discerning taste who is satisfied with only the best.

Presented by
B&G Co
REAL ESTATE COMPANY
Baylor & Company Team of Keller Williams Town Life
Baylor & Company Team
Click To Show Photo

Igor Beyler
Real Estate Advisor
Baylor & Company Team
Click To Show Photo

C. The B.E.A.M.™ System By Beyder&Co.

The B.E.A.M.™ System by Beyder&Co.

Beyder Enhanced AI Mechanism

At Beyder&Co., we don't just market real estate—we engineer outcomes. Our proprietary, data-fueled B.E.A.M.™ system was built to match the most exclusive properties with the most qualified buyers, using deep intelligence, behavioral targeting, and human relationships to guide every move.

Originally developed for ultra-luxury homes above \$10M, B.E.A.M.™ has evolved into a next-generation platform that powers how we think, market, and sell—faster, smarter, and with unmatched precision.



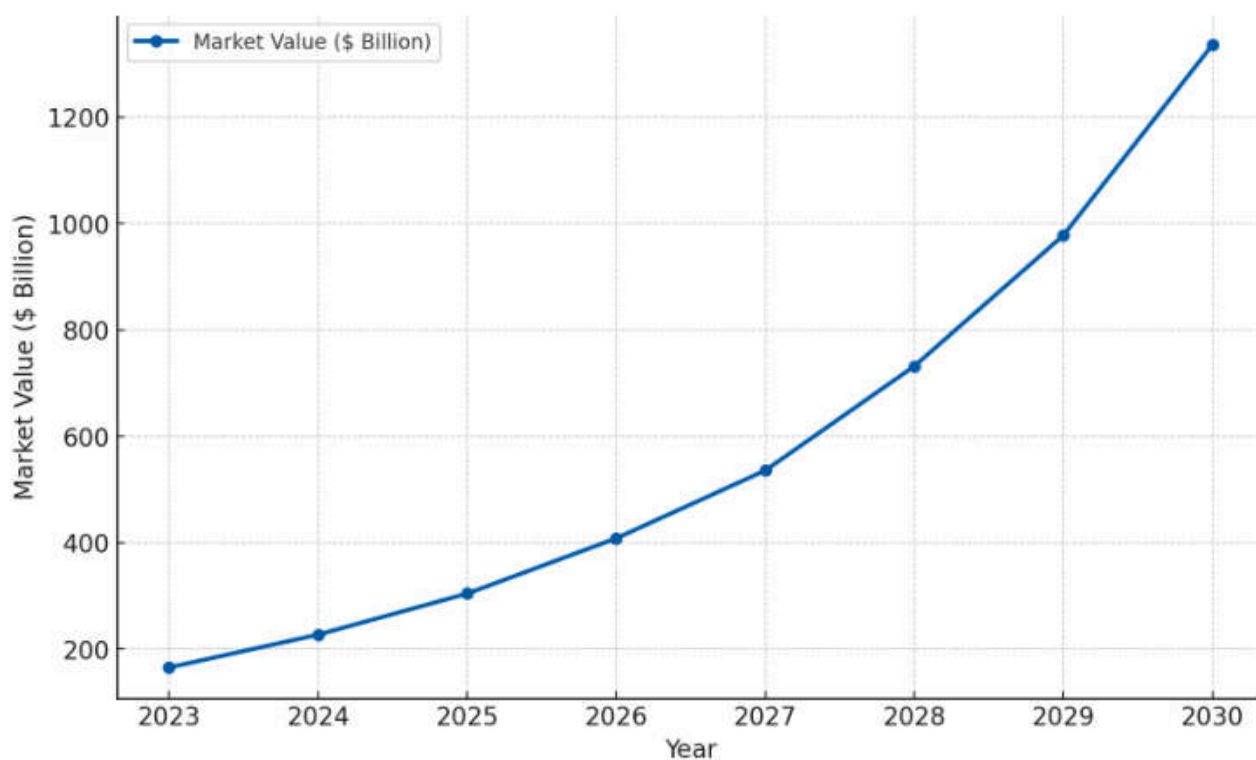
How It Works...

B.E.A.M.™ combines advanced AI with deep human insights to ensure our listings are seen by the right people, in the right places, at exactly the right moment.

Through persona modeling, seasonal behavioral tracking, and content calibrated to resonate with specific interests and lifestyles, B.E.A.M.™ doesn't just cast a wide net—it zeroes in with surgical accuracy.

Whether it's identifying a discreet buyer in Manhattan for a modern estate in Alpine, or targeting international families seeking a move to Bergen County, B.E.A.M.™ is the system behind every successful placement.

A.I. Market Value Growth:



GALLERY

At B&Co. Realty, we don't just list properties —
we curate extraordinary living experiences.

Our comprehensive approach connects discerning buyers and sellers with homes that reflect their vision, lifestyle, and aspirations.

From elegant starter homes to bespoke luxury estates and refined urban residences, our portfolio showcases a diverse range of properties, each elevated by our signature attention to detail, market expertise, and strategic presentation.

Leveraging decades of experience in real estate sales, design, development, and marketing, our team seamlessly blends intelligent strategy with sophisticated aesthetics. We work closely with every client, ensuring a personalized, concierge-level experience from first meeting to final closing.

Through our direct relationships with premier suppliers, global networks, and exclusive marketing channels, B&Co. Realty consistently delivers superior results at every price point — ensuring that every property receives the attention, visibility, and premium positioning it deserves.

At B&Co. Realty, we don't just sell homes — we set a new standard for how they are experienced, presented, and remembered.



204 Vaccaro - A Magnate's Retreat: Grand Living on 1 Acre

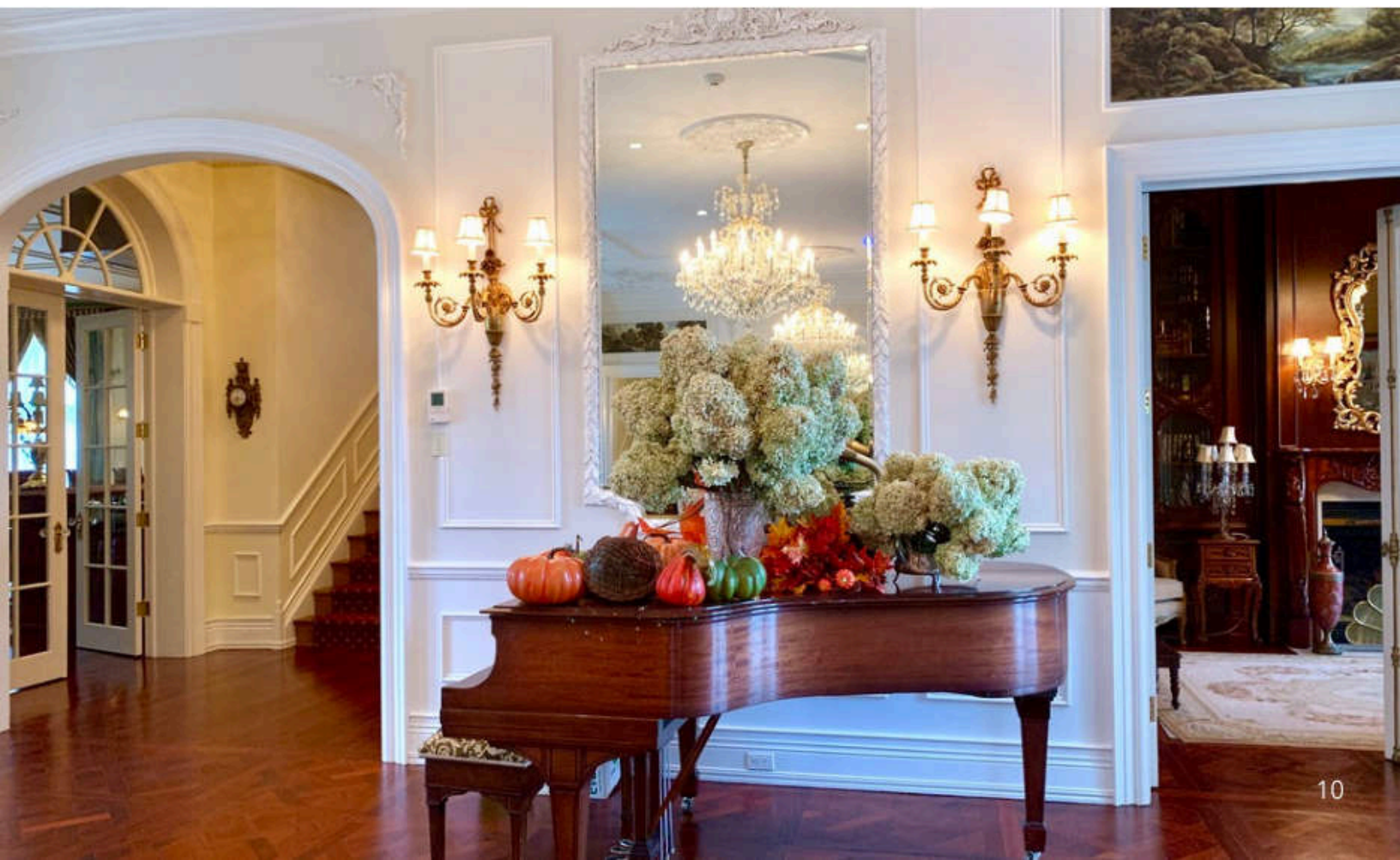
Welcome to 204 Vaccaro Drive, a commanding estate of unmatched grandeur nestled at the Cresskill-Alpine border. A rare opportunity to own nearly 18,000 sq ft of refined living space (9 beds / 15 baths) on approximately 0.82 acres of meticulously landscaped grounds.

Positioned just minutes from Manhattan, this estate offers the privacy of a secluded retreat with the connectivity of metropolitan access. Surrounding this home are some of the region's finest views, manicured gardens, and prestigious addresses. The property straddles both Cresskill and Alpine, adding exclusivity to its appeal.





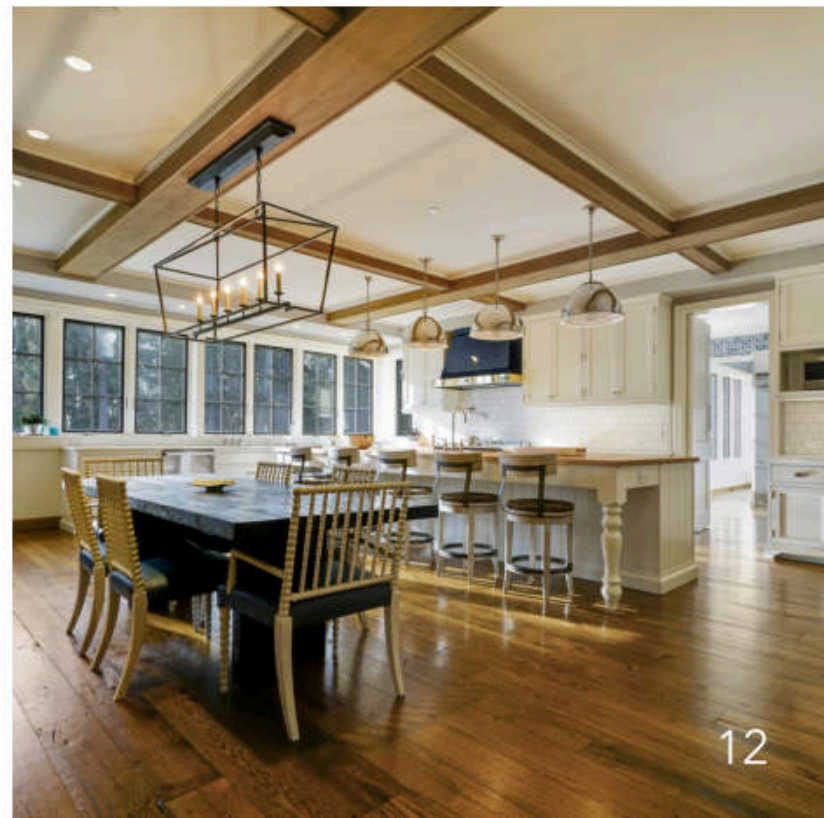


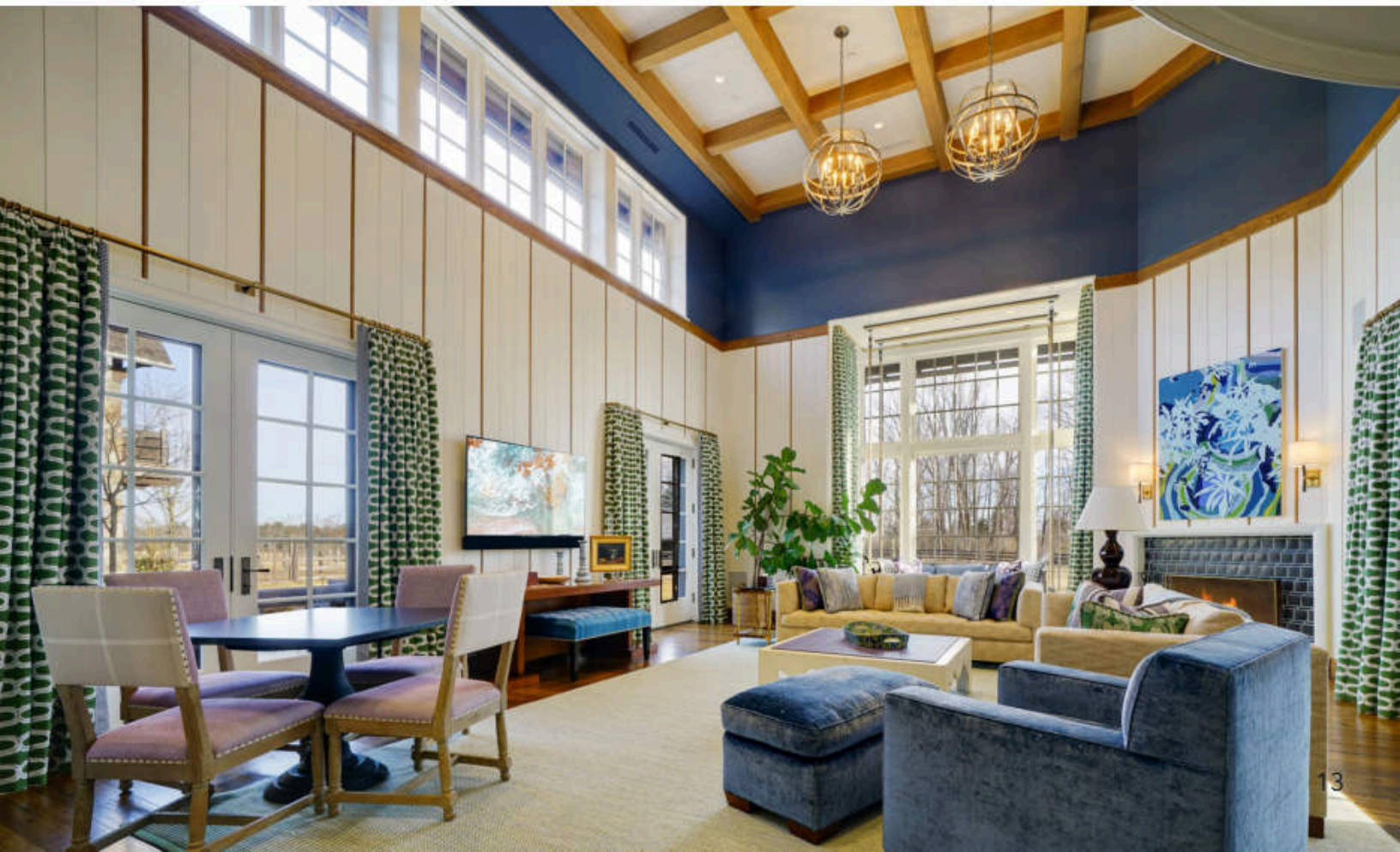


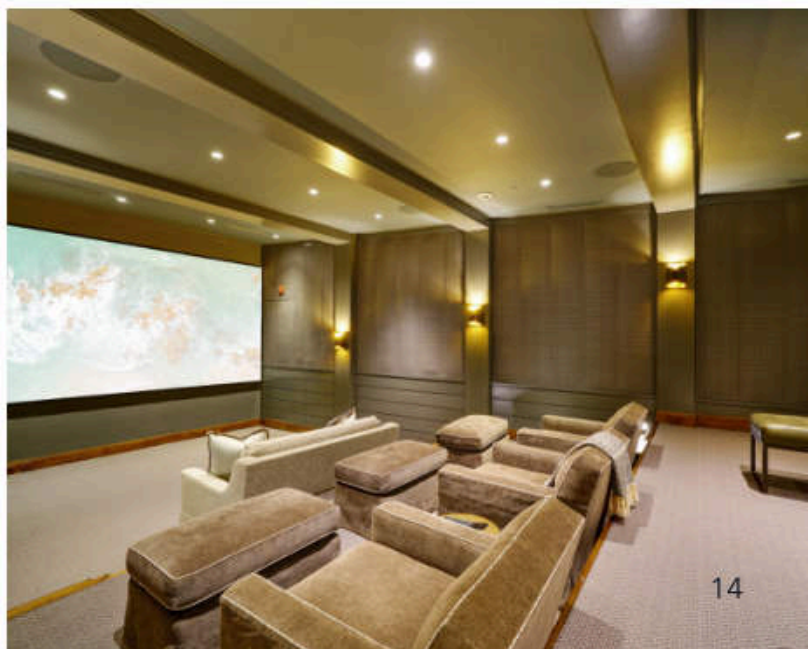


420 Spook Hollow, A Magnate's Retreat: Grand Living on 50 Acres

Experience unparalleled luxury in this gated 50-acre estate, masterfully designed by renowned architect Alan Wanzenberg—celebrated for his work on Manhattan's elite residences like 150 Charles Street—and exquisitely appointed by Alexa Hampton, principal of Mark Hampton LLC, known for her sophisticated interiors and contributions to prestigious projects such as private residences for the last 3 living U.S. Presidents. This seller was a prominent shipping magnate. The estate offers over 15,000 sq. ft. of living space, featuring a dramatic two-story great room, gourmet kitchen with multiple pantries, state-of-the-art movie theater, full gym, and a separate guest house. Located conveniently, just minutes from Mar-a-Lago, this property combines world-class design, privacy, and convenience in one of Bedminster's most exclusive enclaves.









27 Timberline Dr. - Prime 4-Acre Estate Lot

Situated deep within Alpine's exclusive Timberline Manor, 27 Timberline Drive offers an unparalleled opportunity to create a bespoke estate. This magnificent, flat, and landscaped 4-acre lot boasts over 500 feet of road frontage and an approximate depth of 490 feet, forming an almost perfect square-shaped building envelope. The property can accommodate a residence exceeding 40,000 square feet, along with accessory structures, a pool, and a tennis court.



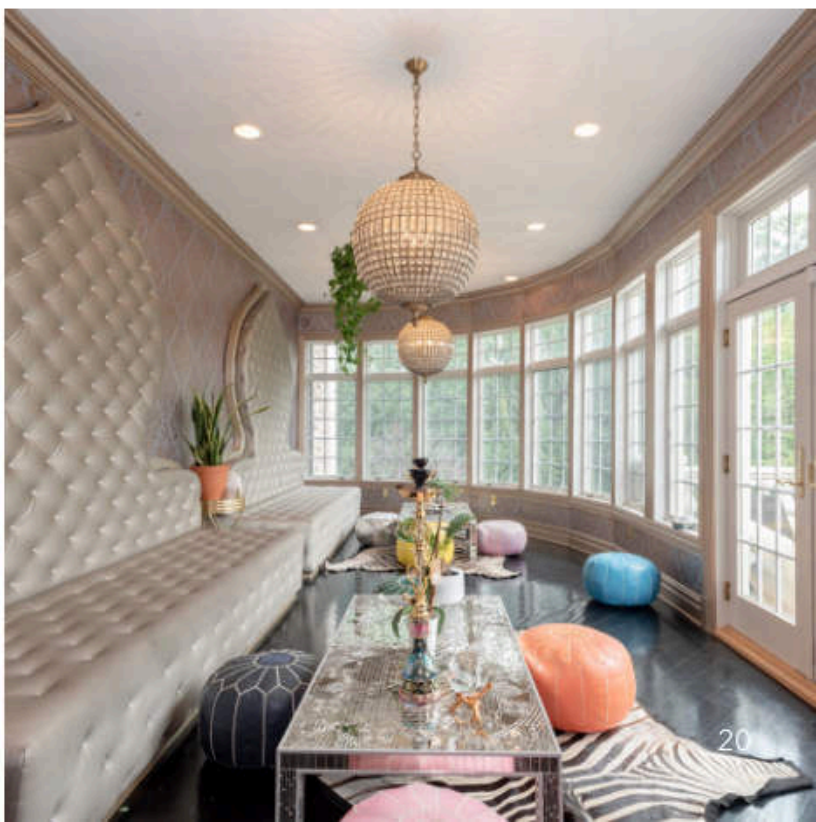






Welcome to 6 Kings Court – A Legendary Estate Owned by NFL Star Bart Scott

A grand, gated estate set on 10 acres, seamlessly blending timeless elegance with modern luxury. This exceptional home features a dramatic double-height entry, expansive living and entertaining spaces, a designer chef's kitchen, and a boutique-style 2,000 sq.ft. custom closet that has 20 foot ceilings – all designed for ultimate comfort and showmanship. The spa-like primary suite, multiple stylish lounges, and seamless indoor-outdoor living areas are highlighted by a fire pit lounge and an impressive 15-car garage. The property was also featured on Animal Planet for its spectacular bi-level koi pond, complete with waterfalls and dramatic lighting.



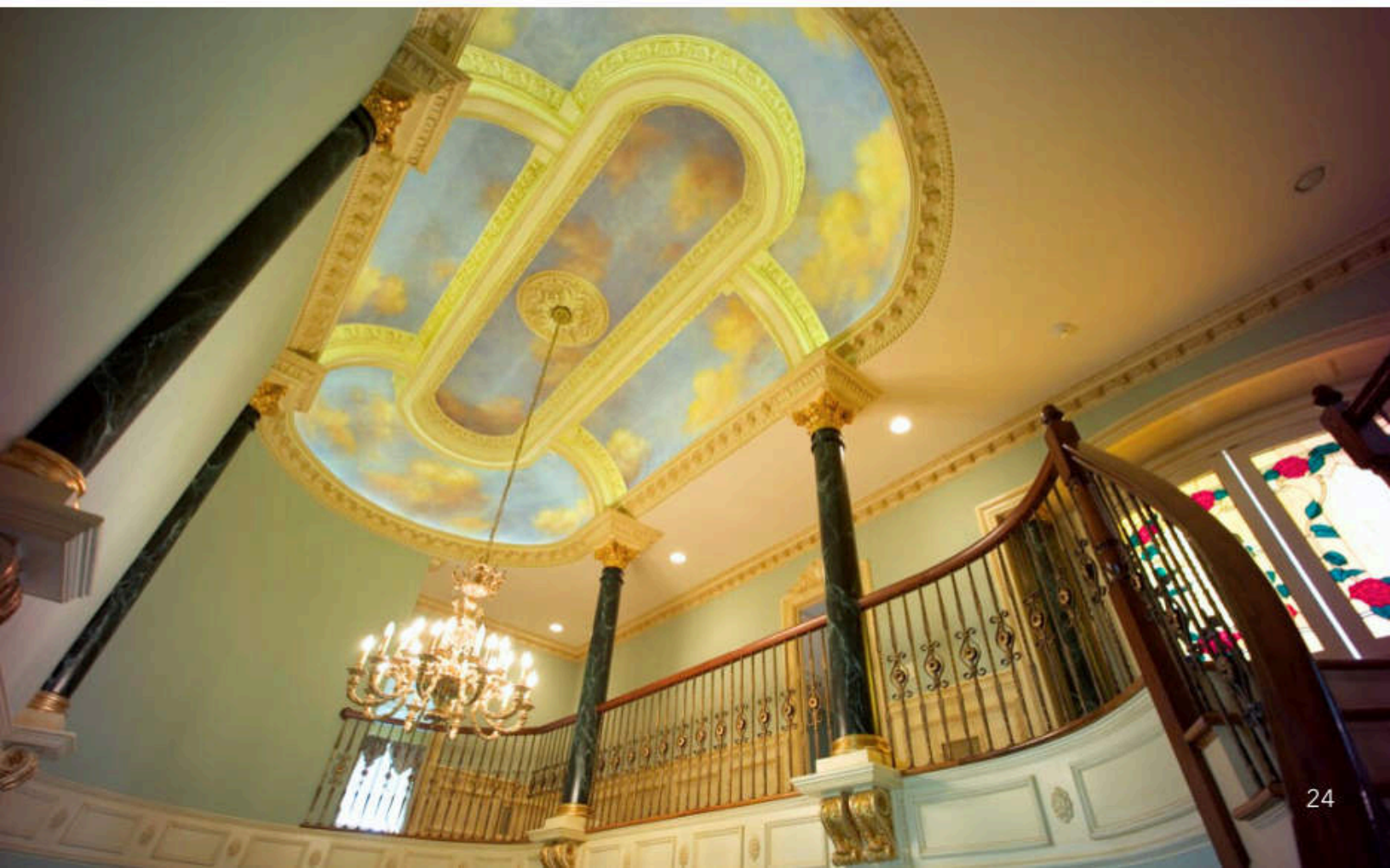
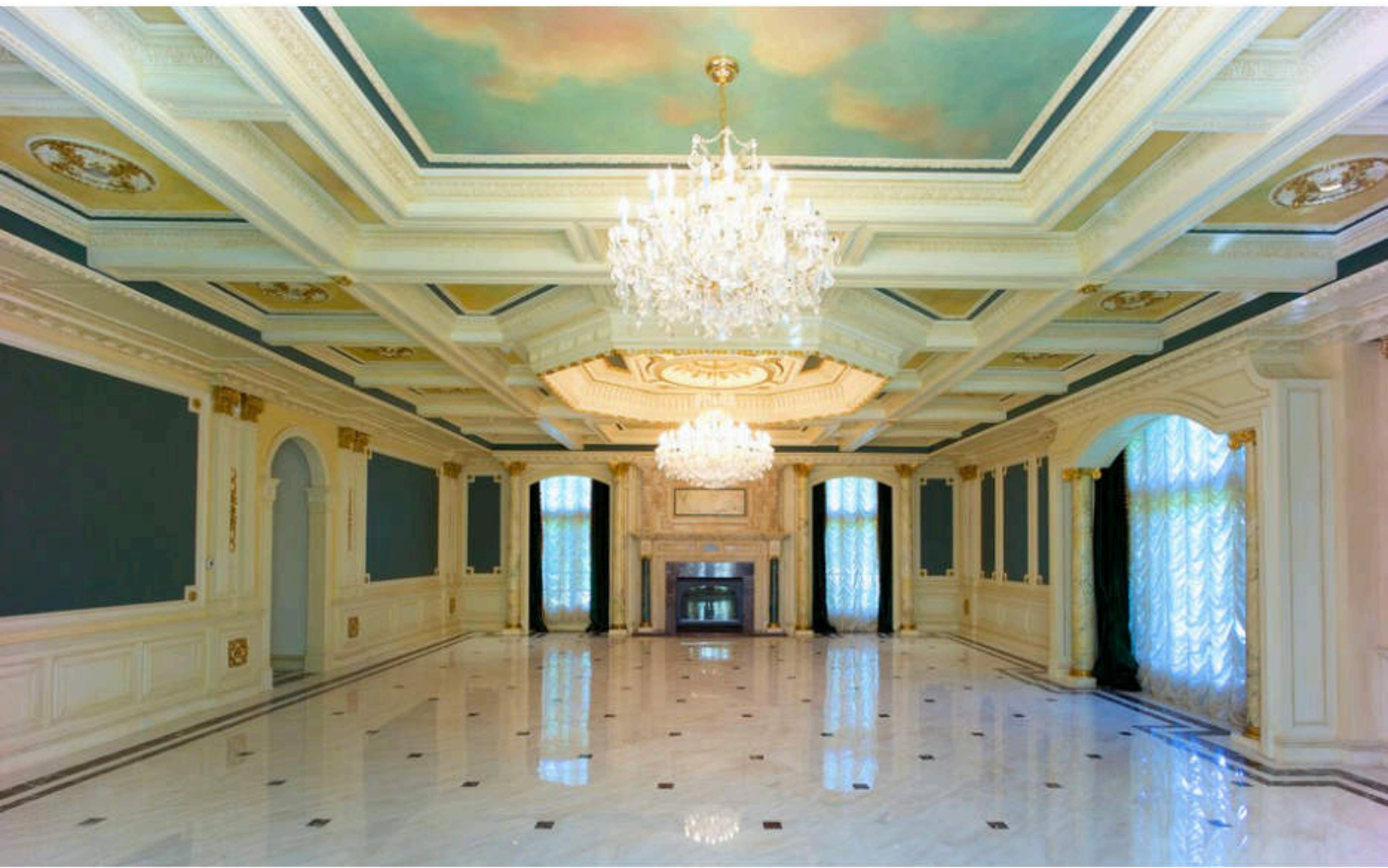


34 Timberline Dr. - Grand Entertaining and Resort Living at Its Finest.

This grand 20,000 sq.ft. estate owned by Russian celebrity and TV personality Yelena Malysheva. Nestled on 2 private acres, this stately residence features eight bedrooms, ten bathrooms, and exquisite finishes throughout. Highlights include a soaring two-story great room, banquet-sized dining room, marble columns, a private ballroom, a home theater, and a fitness center. The resort-style pool and lush grounds make this an entertainer's dream. enclaves.









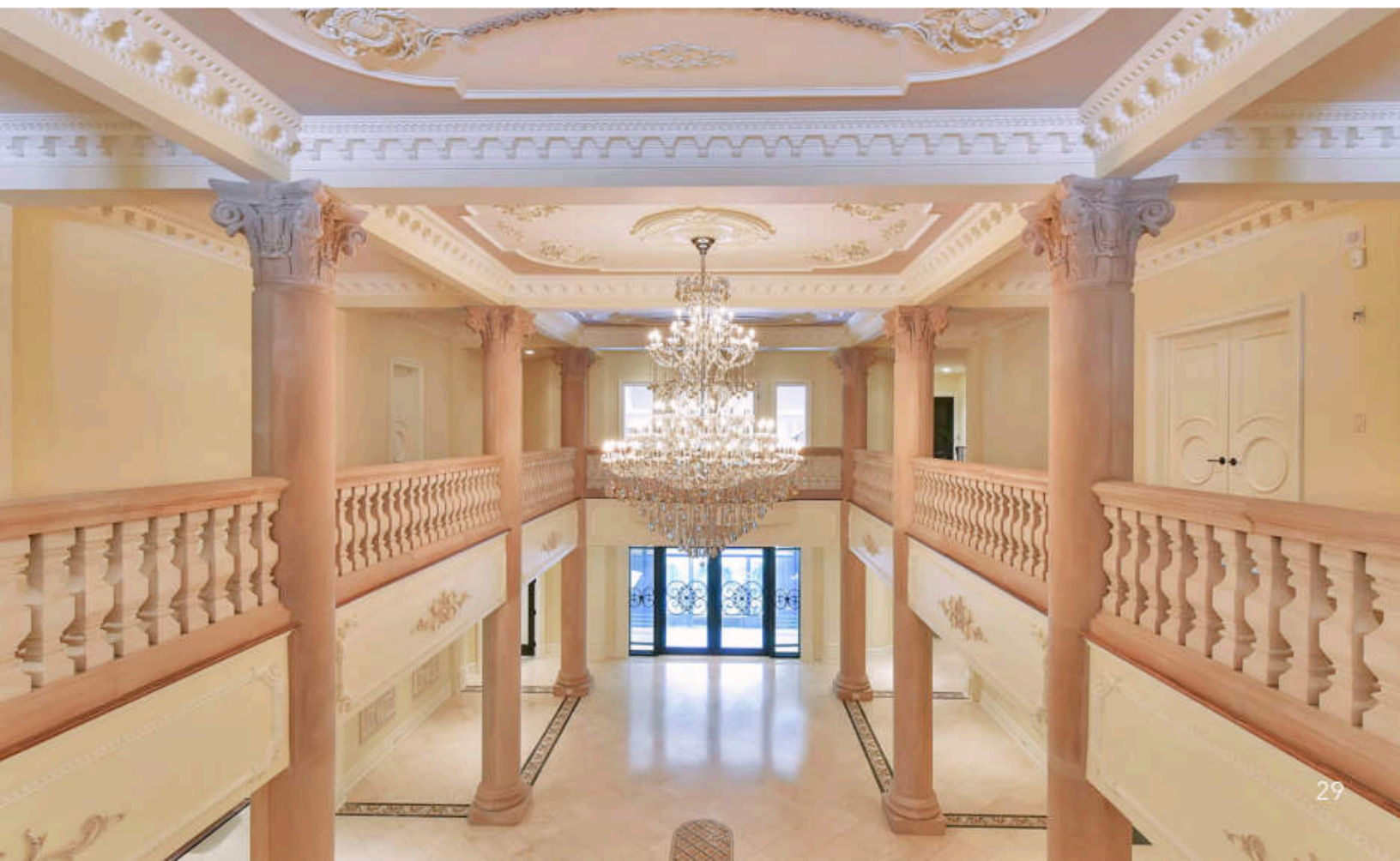
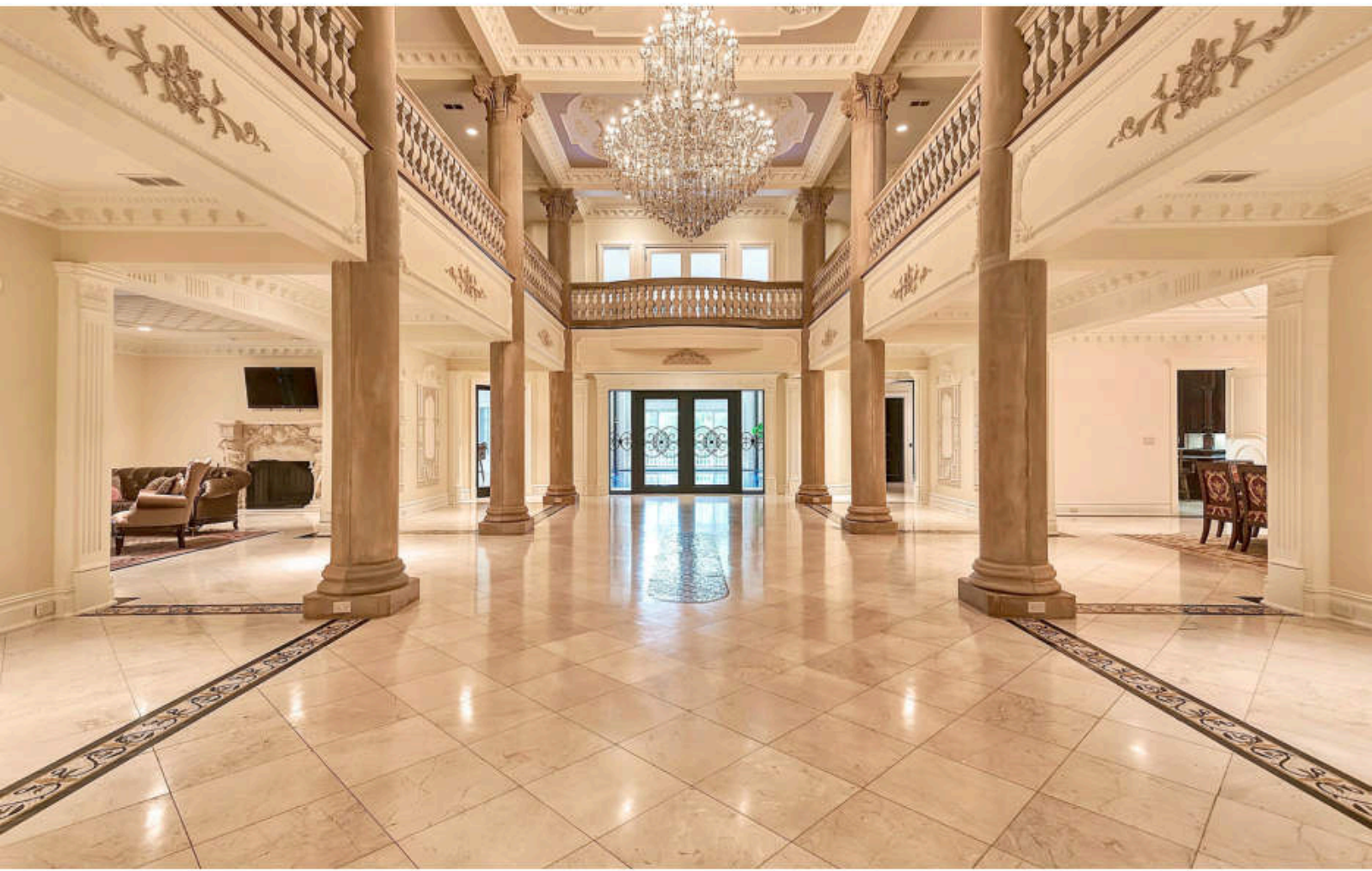


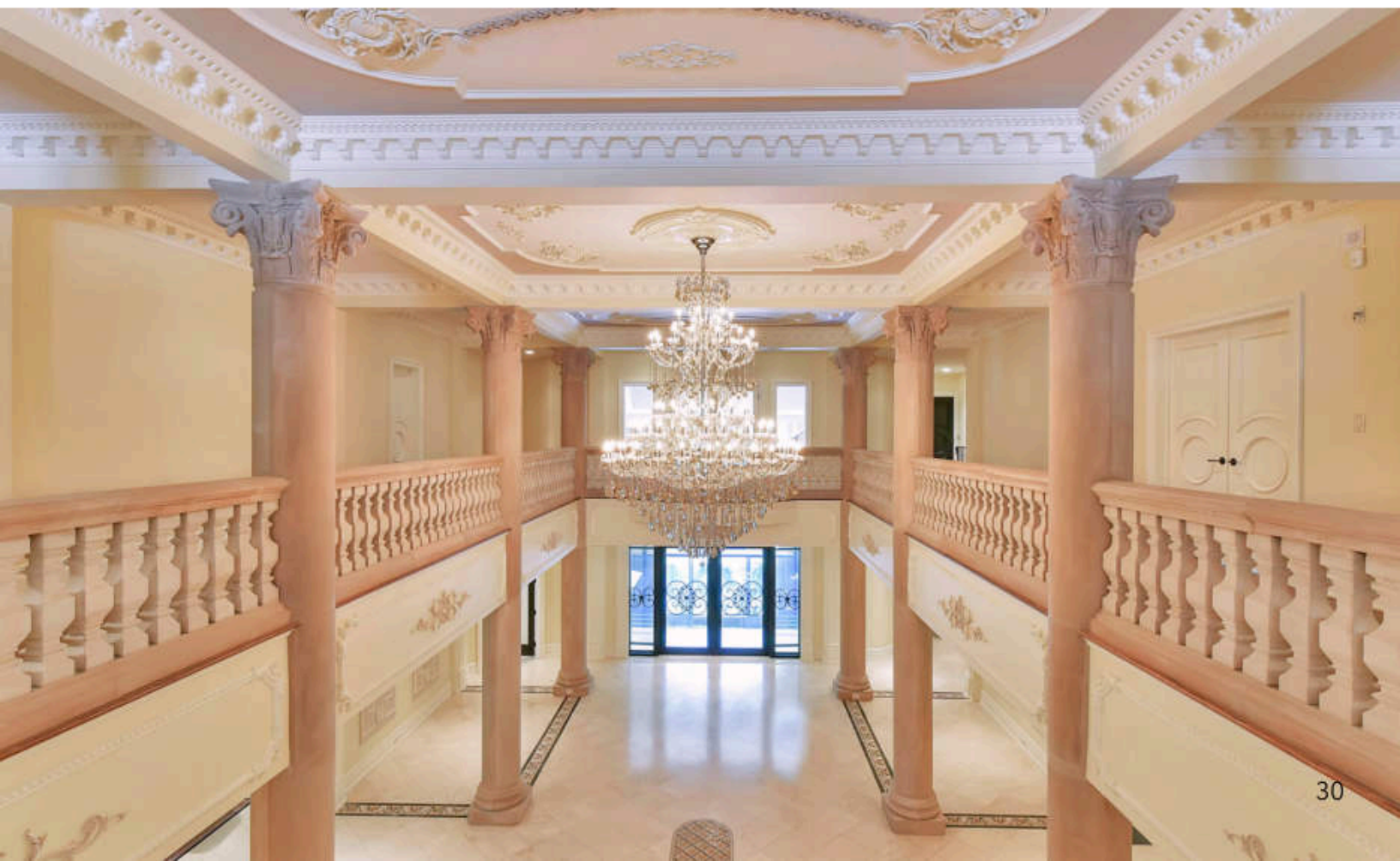


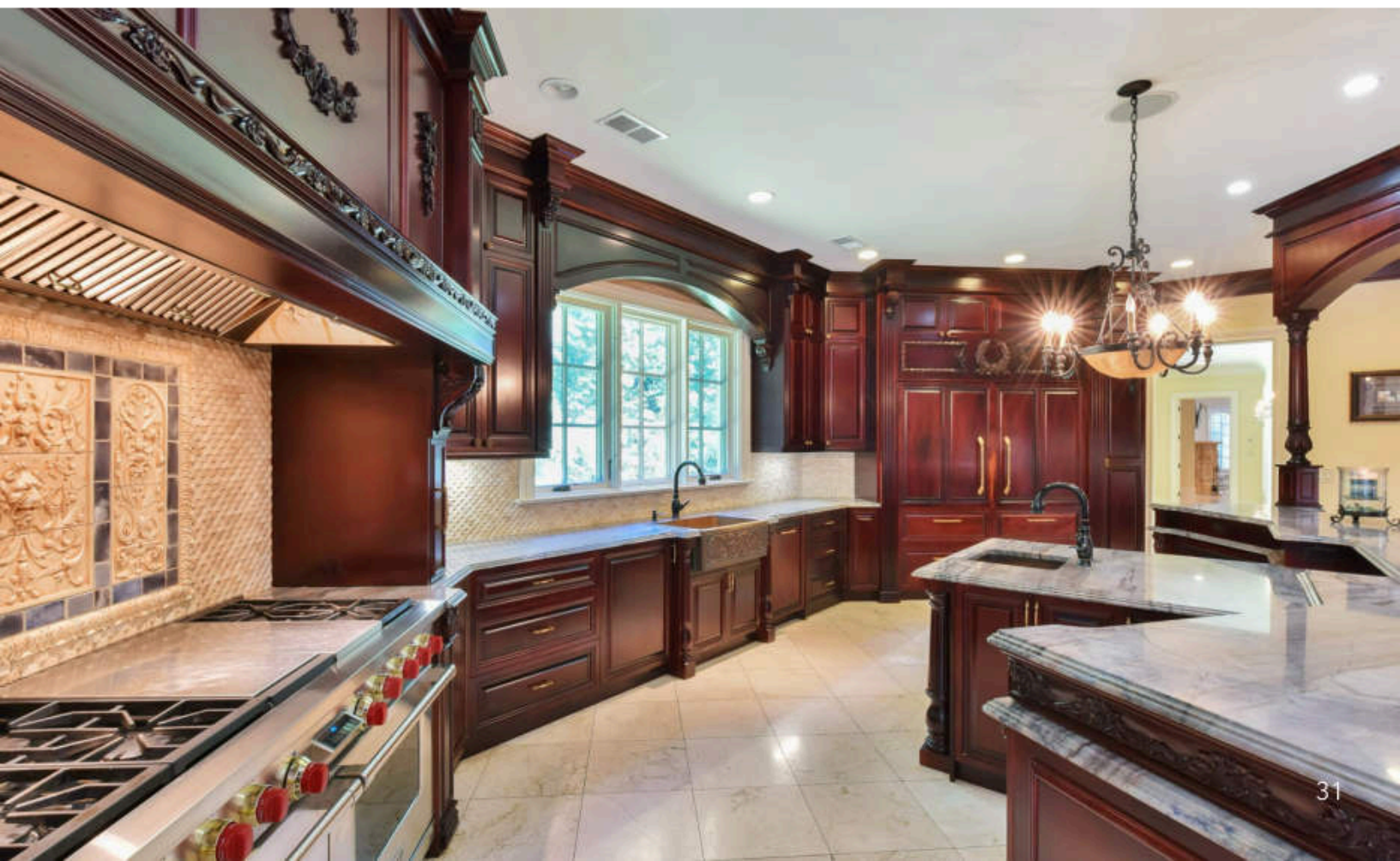
105 Chestnut Ridge Rd. - The Stone Palace: 25,000 Sq Ft of Unrivaled Luxury

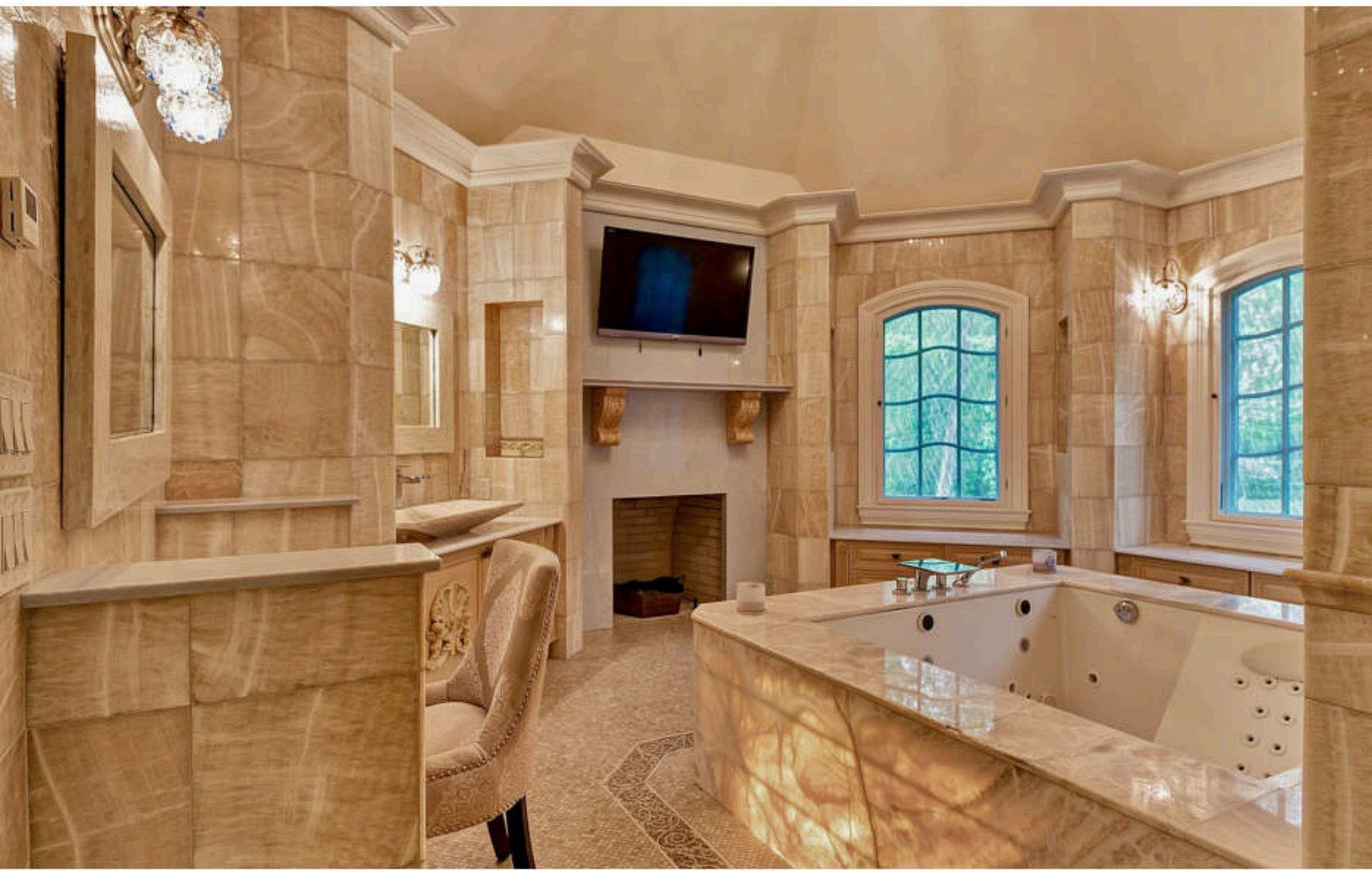
A truly unmatched 25,000 sq.ft. mansion set on 4.5 gated, private acres. Built with commercial-grade construction and green technology, this residence blends timeless elegance with modern sustainability, featuring a grand two-story foyer, massive entertaining spaces, an indoor pool with 24-foot waterfalls, and six fireplaces throughout. All bedrooms are ensuite with private terraces and lofts, while sweeping balconies offer panoramic views of the estate. Additional highlights include a regulation tennis court with lights, a 4+ car garage, an elevator to all levels, geothermal and solar energy systems, and a porte-cochère with courtyard parking. A true masterpiece.

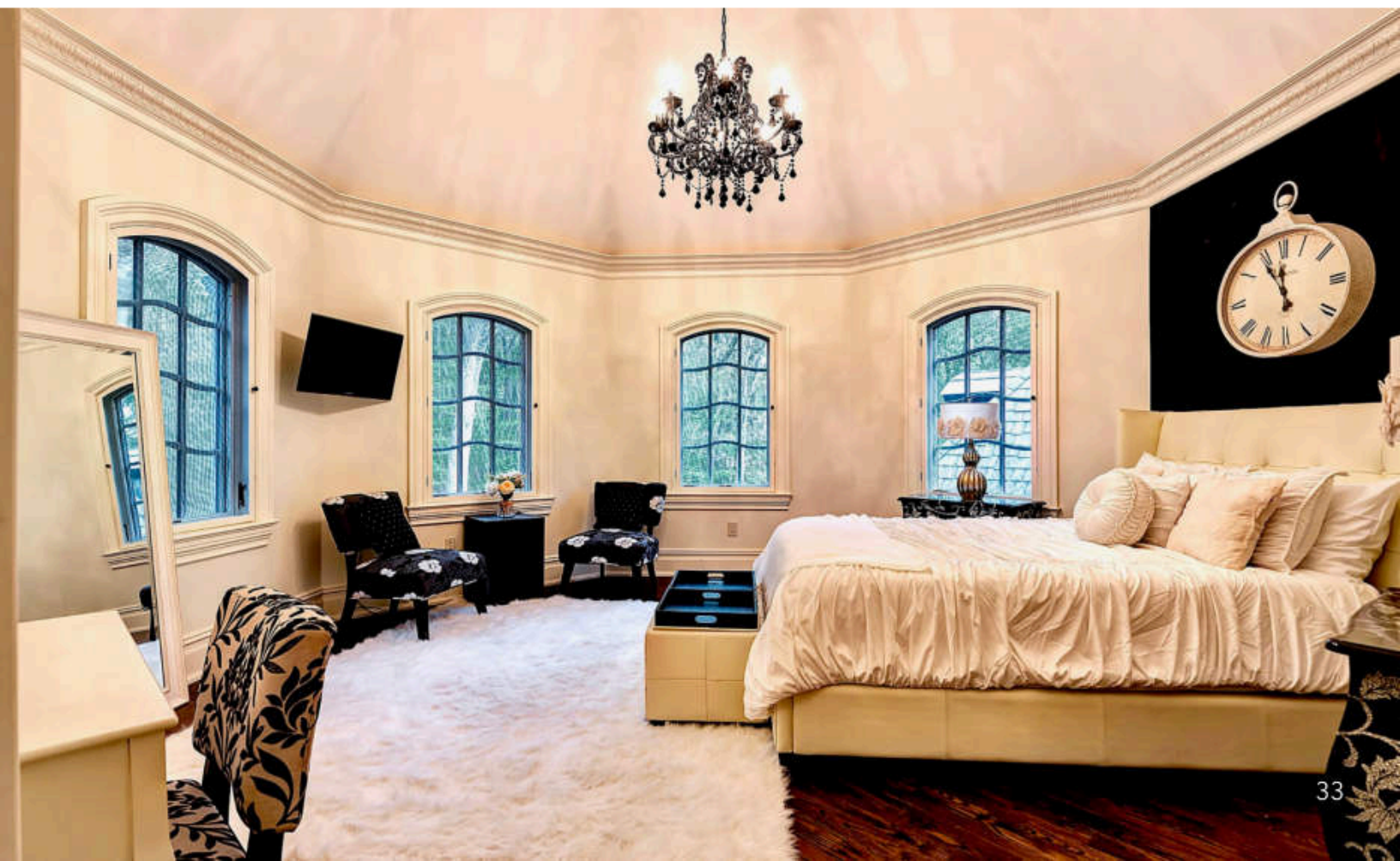








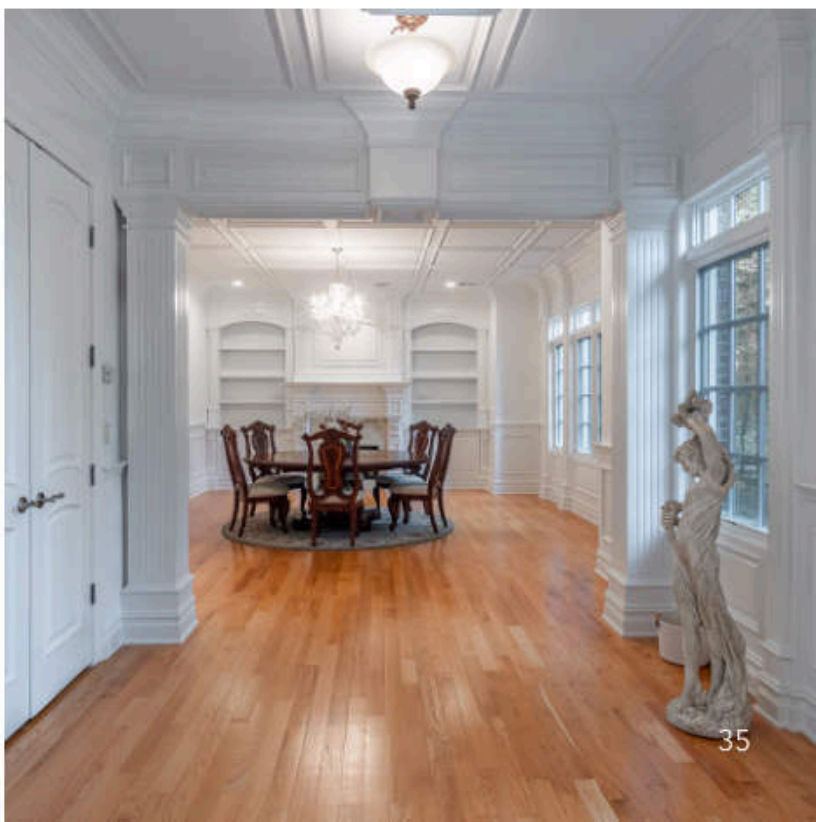






26 Berkery Pl., A Champion's Estate: Built for Grand Living

Owned by Giants Super Bowl Champion Chris Canty, this grand custom estate blends timeless architecture with luxurious living. Set behind gates on a beautifully landscaped lot, the home impresses from the start with a dramatic double-height entry, intricate millwork, and an elegant sweeping staircase. Inside, soaring ceilings, oversized arched windows, and detailed coffered ceilings flood the home with natural light. Highlights include a designer chef's kitchen, richly paneled office, lavish primary suite with spa-like bath, and a boutique-style walk-in closet. The home also features a custom movie theater, wine cellar, and elegant formal rooms perfect for entertaining.

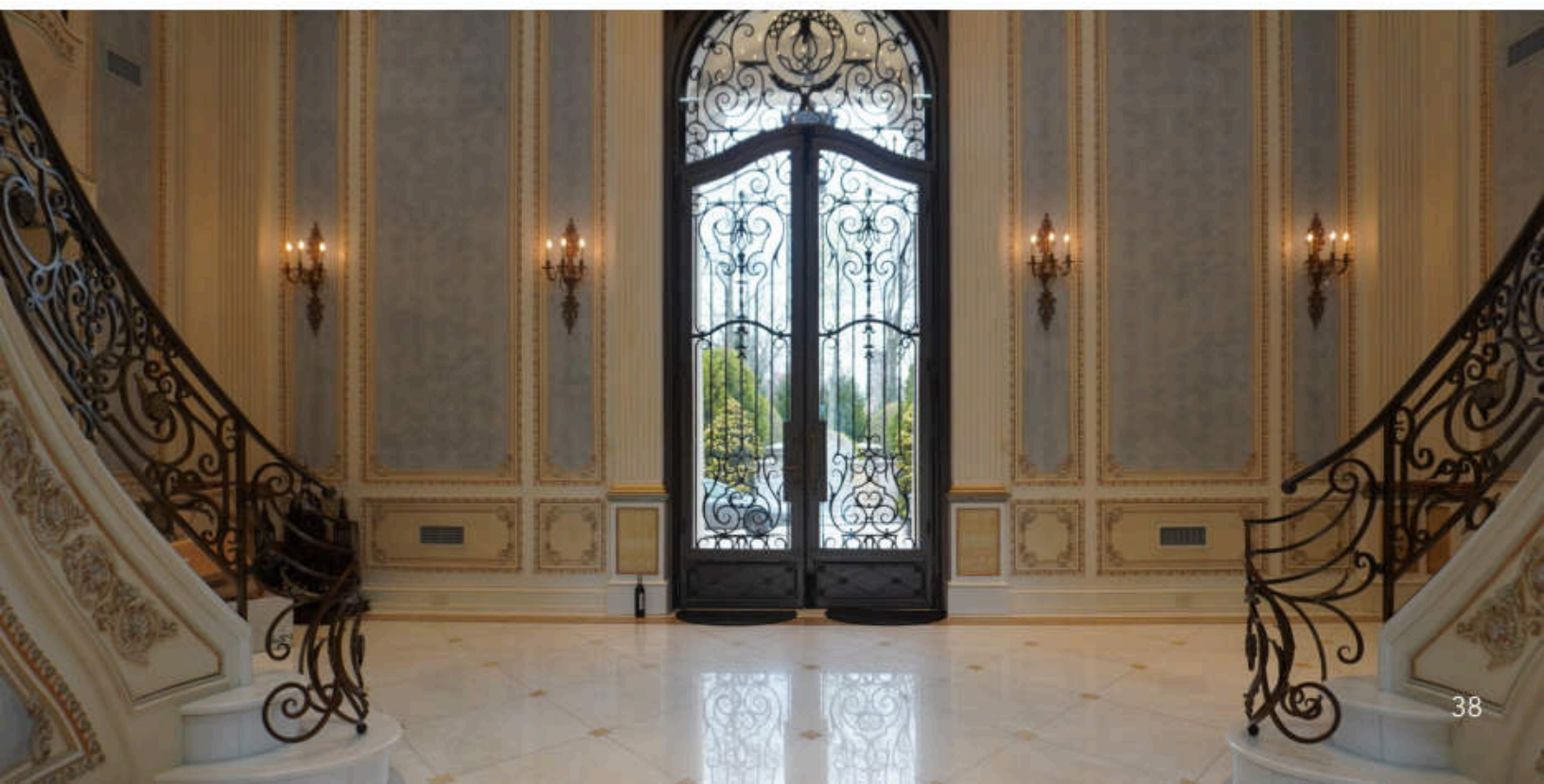


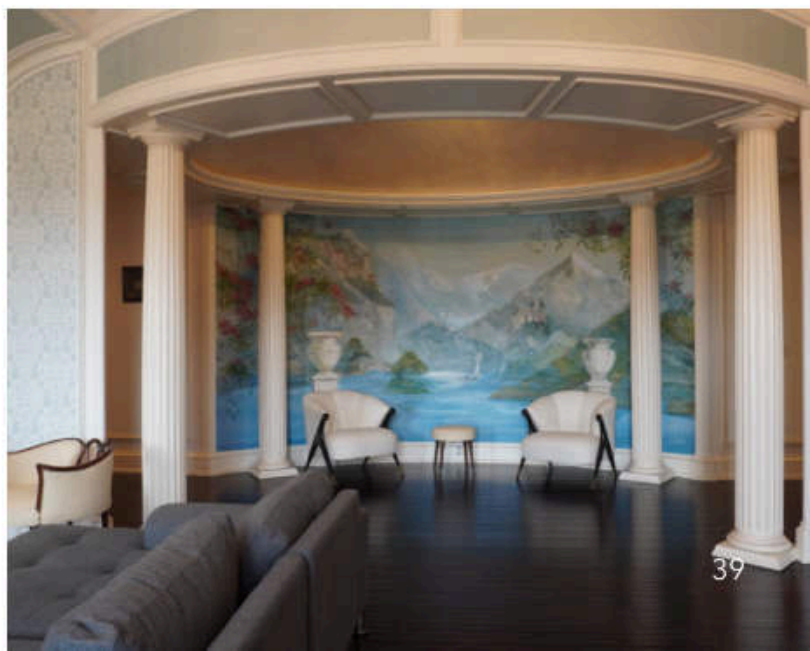




31 Rio Vista Dr. – The Crown Jewel of Alpine, NJ

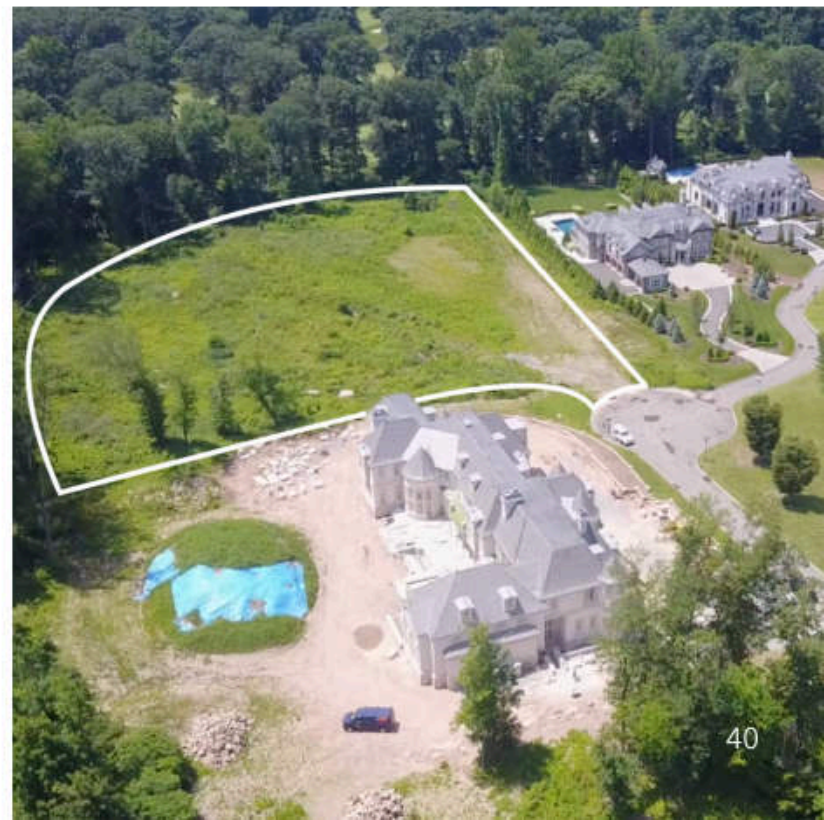
This 22,000 sq.ft. estate, owned by fashion designer and founder of the fashion brand Theory, is perfectly situated on the most prime location in town, this grand estate sits on 2 acres of meticulously manicured grounds, offering complete privacy and timeless elegance. The home features soaring ceilings, intricate millwork, multiple entertaining spaces, and a one-of-a-kind glass observation room overlooking the indoor pool. From the dramatic double staircase to the expansive gardens and resort-style amenities, every detail speaks to a lifestyle of understated sophistication.





6 Frick Dr. - Lot on Historic Frick Drive with Panoramic Views and Approved Plans.

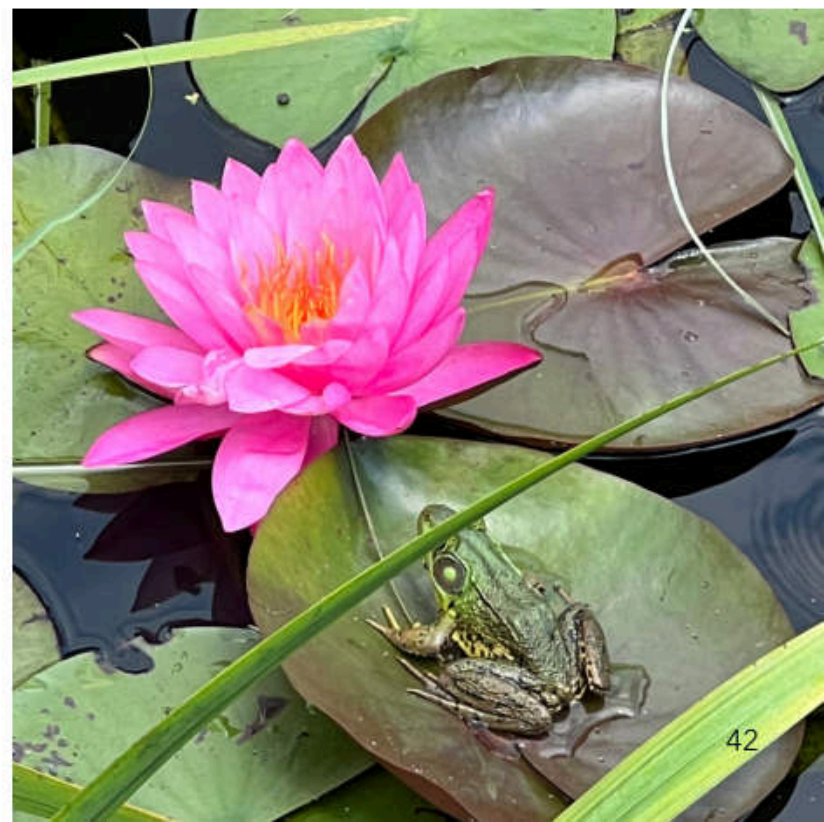
Located in the only exclusive gated estates in all of Alpine and Demarest, on the historic property of Henry Clay Frick II. Its 1.9 acres of fully cleared land is ready for endless possibilities. Situated in the cul-de-sac of Frick Drive with exceptional topography the land features panoramic views of Alpine County Club. Architectural plans by Robert Zampolin with pool and tennis court. A private and extremely desirable location to build your dream home.





French Manor Estate on 17 Gated, picturesque Acres.

This beautiful estate sits on over 17 acres of private, manicured land, featuring a gated entrance, bubbling fountains, and sweeping pastures. Every detail was handcrafted to create a timeless masterpiece, blending old-world charm with modern comforts. From the soaring ceilings to the hand-painted murals, this estate offers a once-in-a-lifetime lifestyle surrounded by beauty and privacy. With a grand two-story foyer, elevator access to all levels, four fireplaces, two Clive Christian kitchens, an in-law suite, and museum-quality craftsmanship throughout, every inch of this home is built for an extraordinary lifestyle.





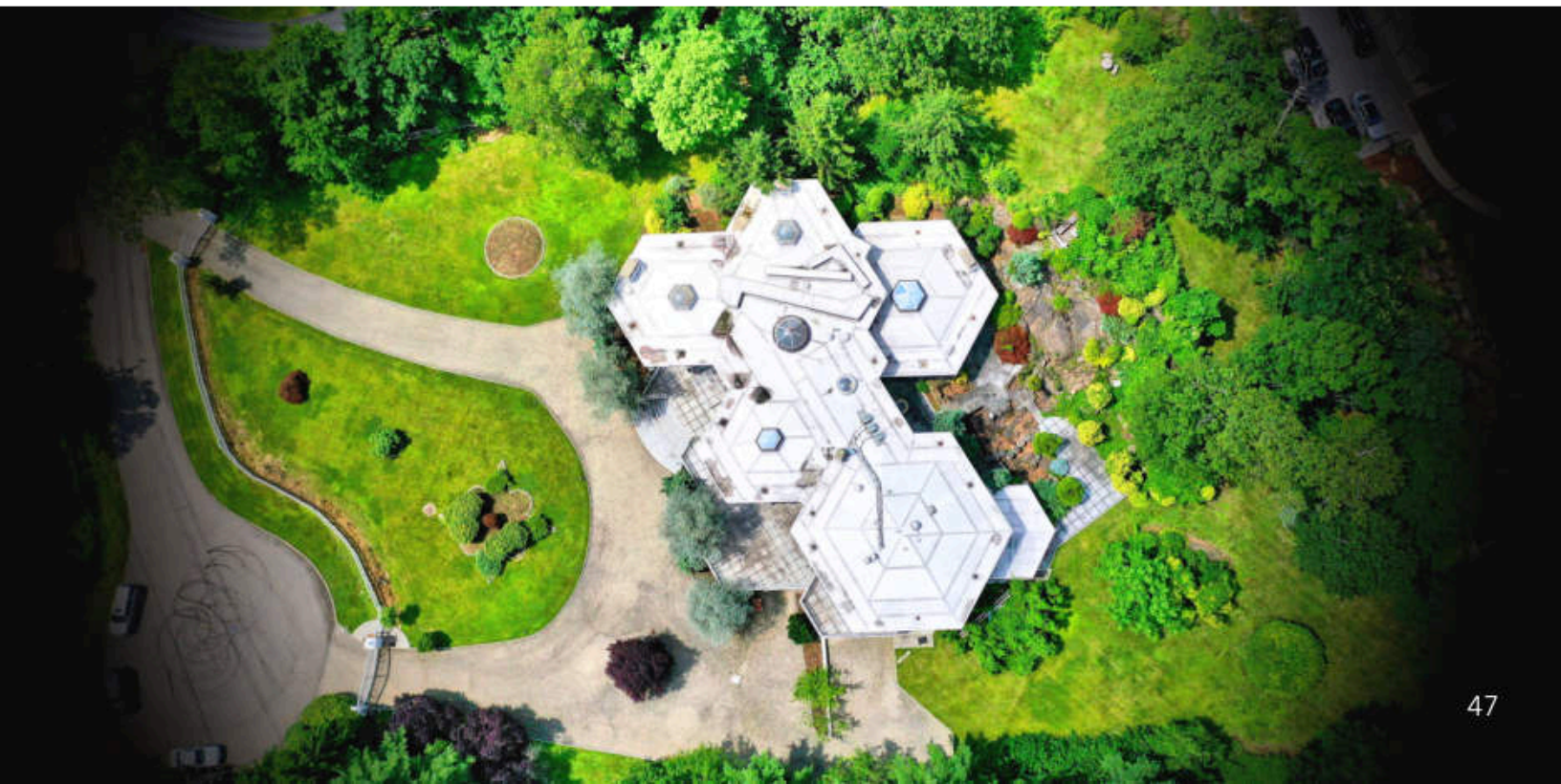


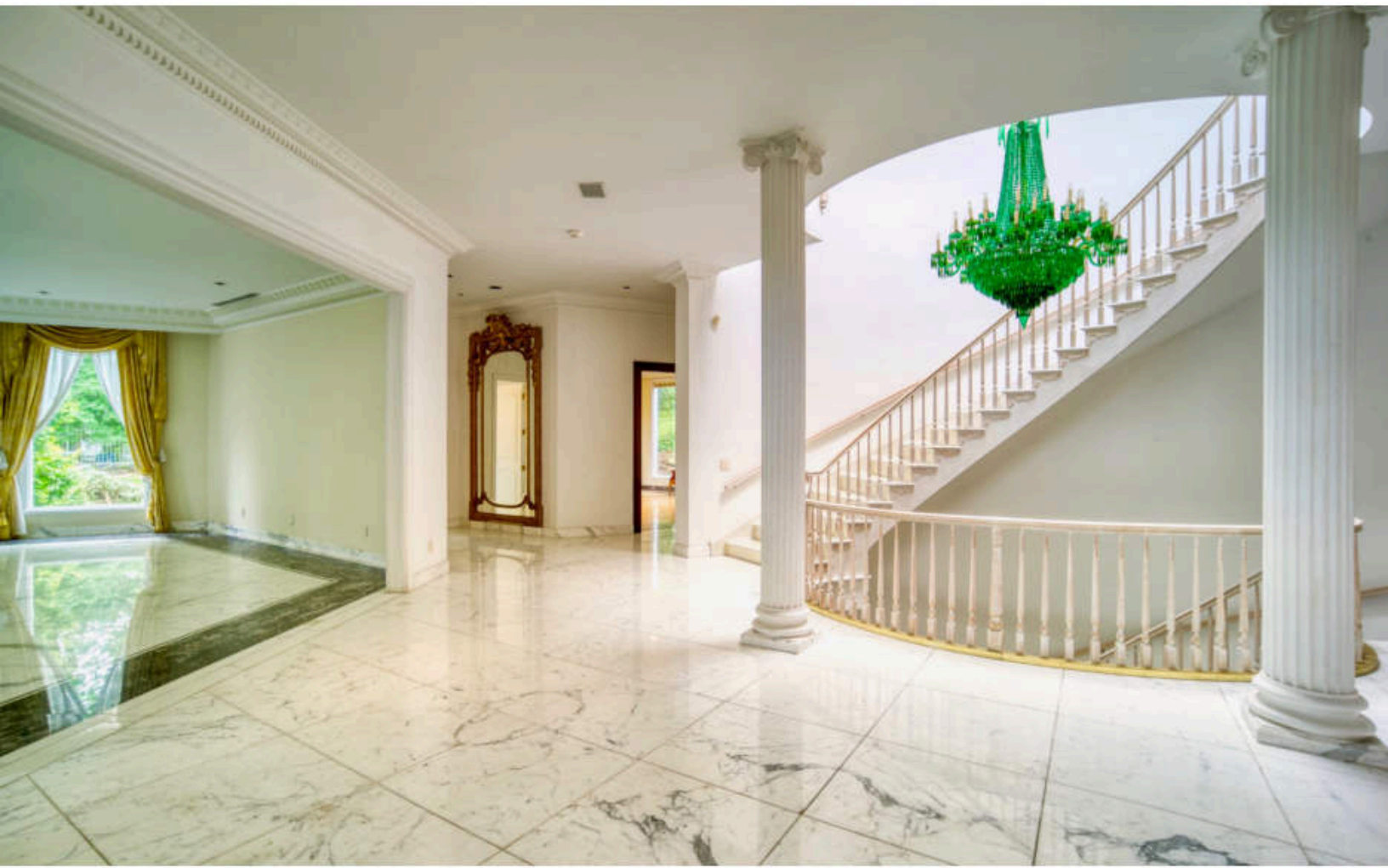




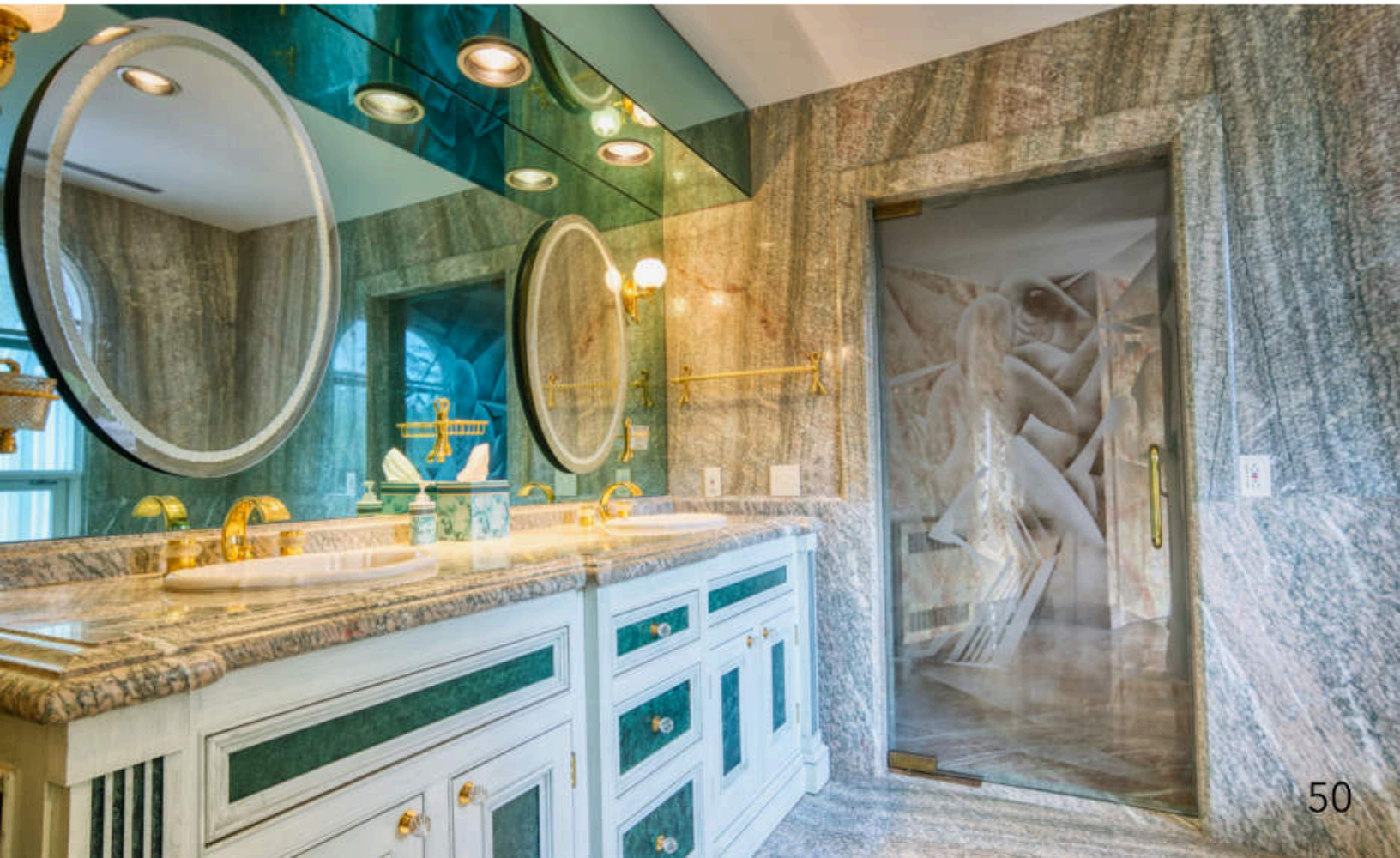
40 Allison Rd. - A Monumental Estate with Rock & Roll History

Once owned by the iconic Isley Brothers, this palatial home served as their private party house and recording studio – until the passing of O'Kelly Isley at one of their famous parties led the family to move on. Set on 2 private acres in Alpine's exclusive Kings Wood section, this 20,000 sq.ft. gated residence offers unmatched craftsmanship, with soaring ceilings, grand-scale rooms, and striking book-matched marble throughout. Perfect for lavish entertaining, the sun-filled layout features multiple marble fireplaces, a dramatic circular driveway, elevator access, and a 4-car garage – all tucked away on a quiet cul-de-sac in one of Alpine's most prestigious enclaves.







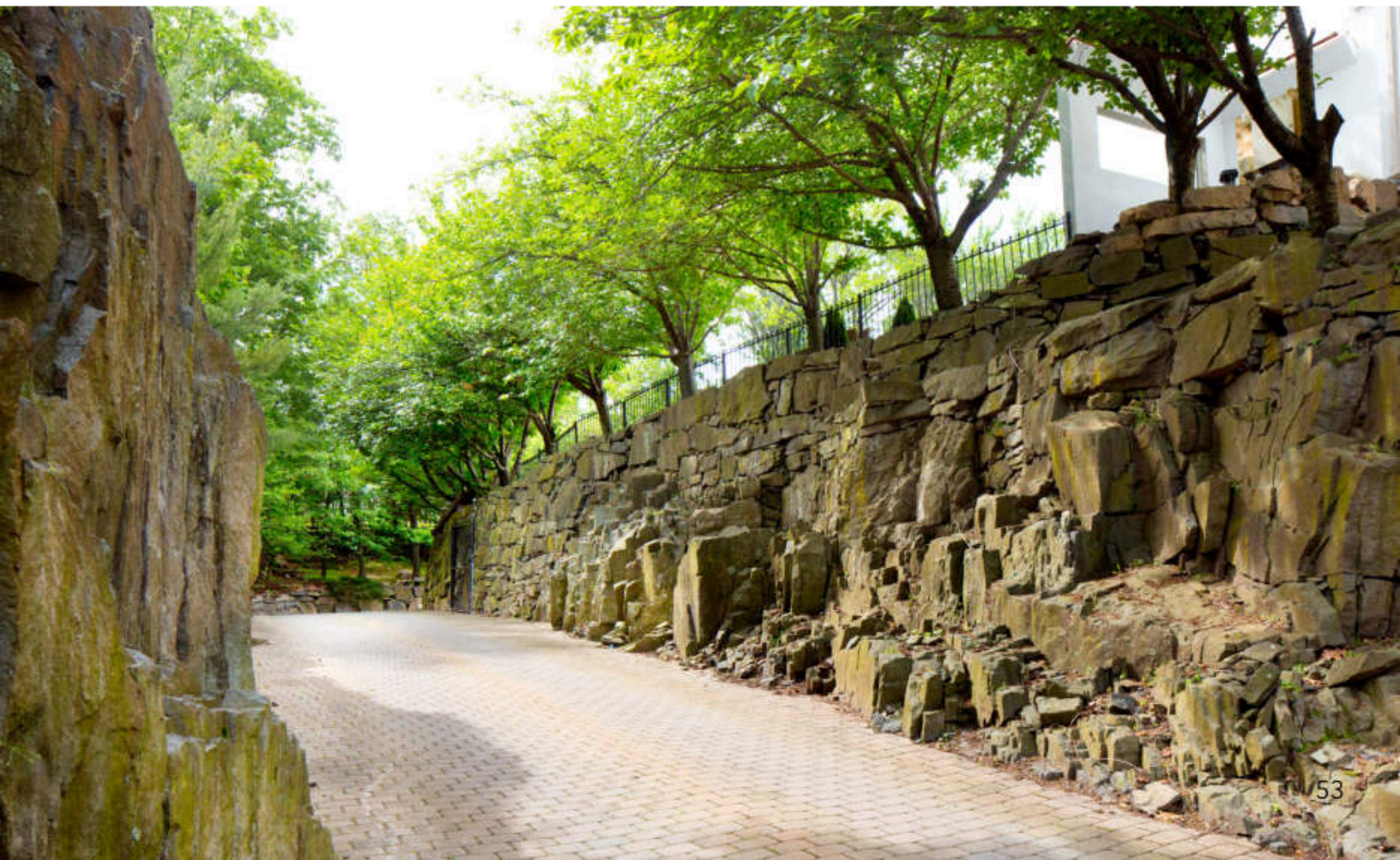




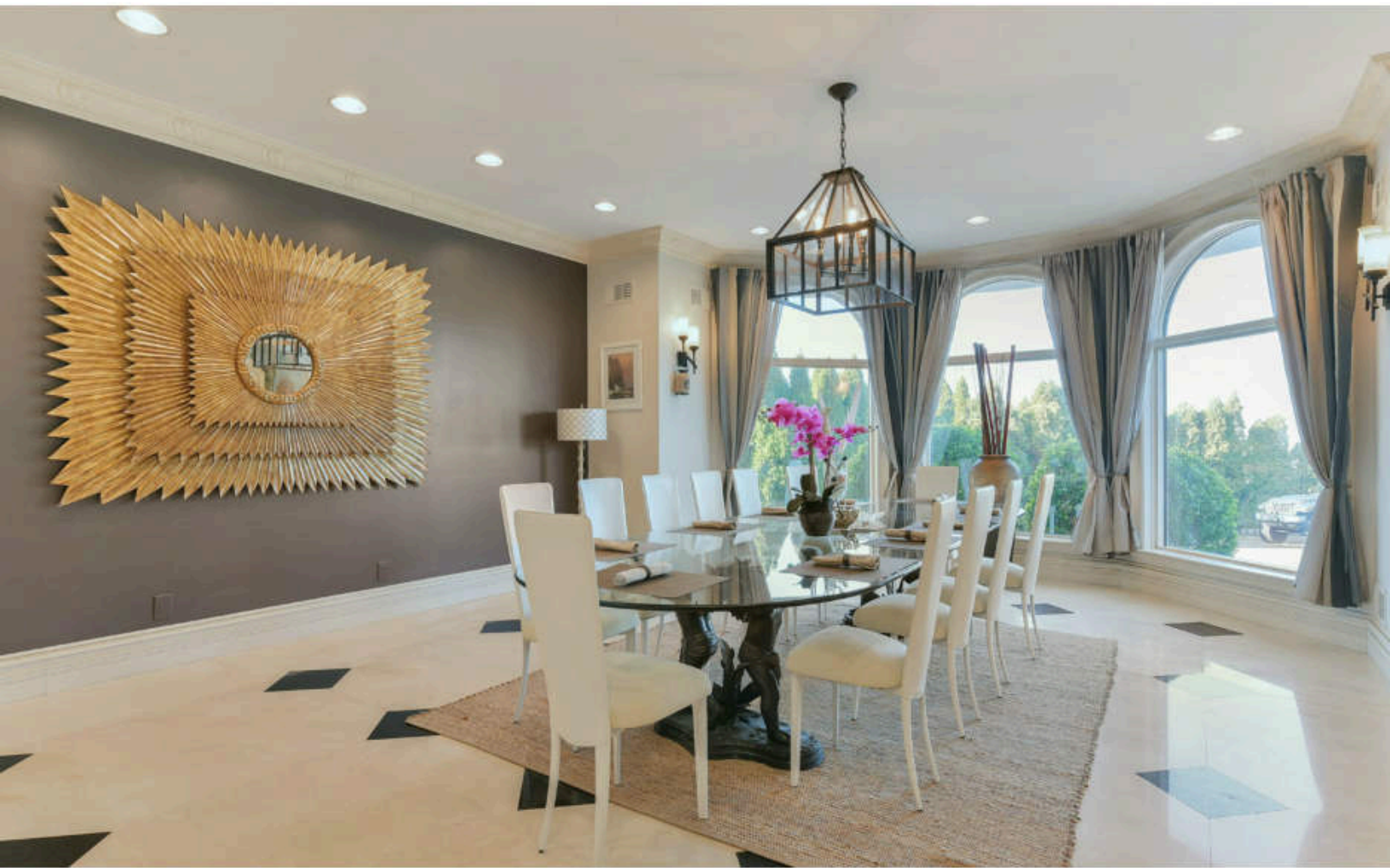
142 Hoover Dr. - A Legendary Estate Loved by Icons

Once a favorite East Coast retreat for Michael Jackson and close friend Rod Stewart, this extraordinary 19,000 sq.ft. estate in Cresskill, NJ is a true masterpiece. Owned by renowned art dealers with deep celebrity ties, "La Villa Serenity" blends Spanish and mid-century modern design across 1.5 private acres. Highlights include a grand bridal staircase, custom Italian kitchen, full movie theater/nightclub, wine cellar, spa-like primary suite, and a resort-style backyard with a pool, outdoor kitchen, and basketball court.

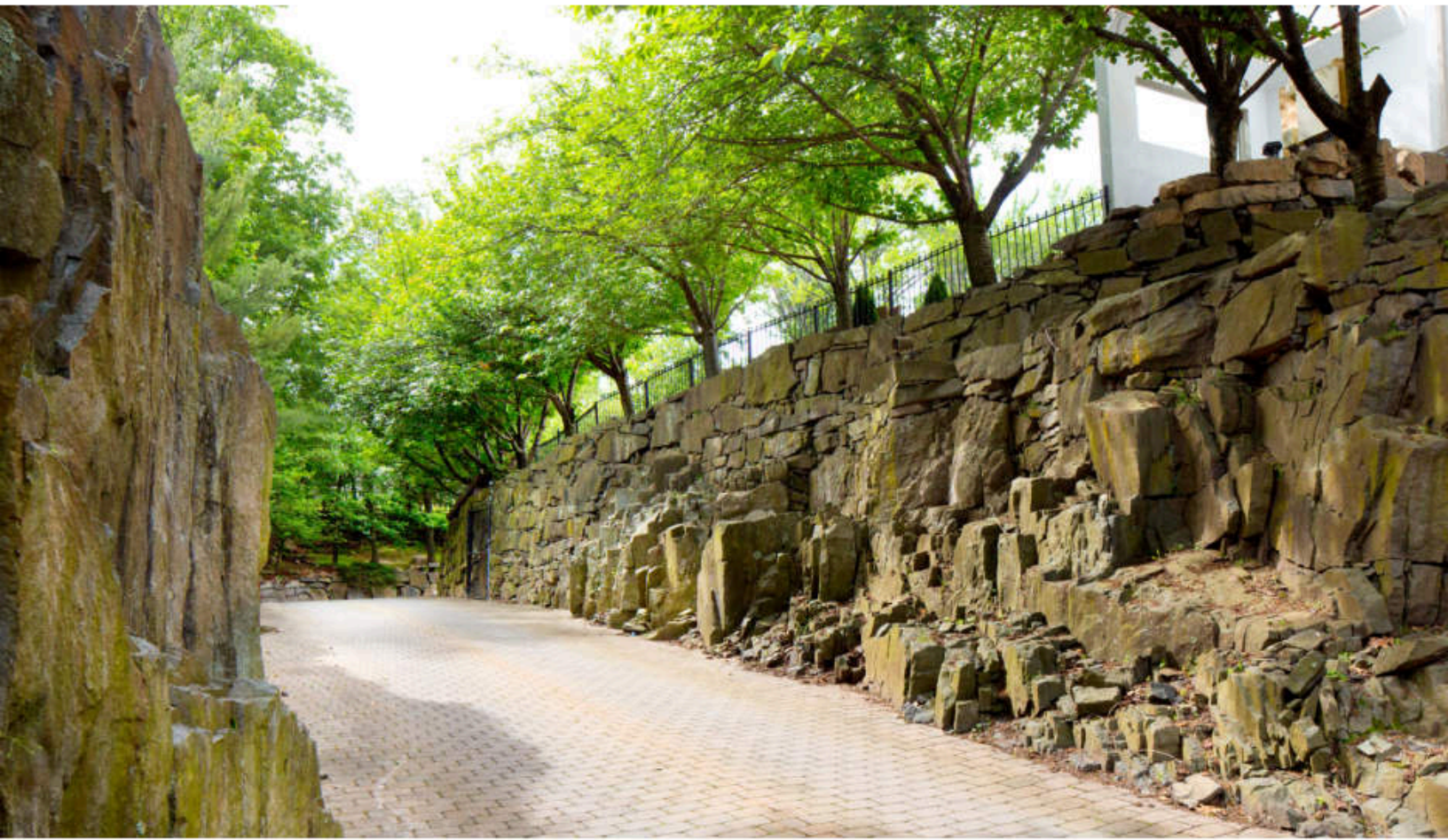








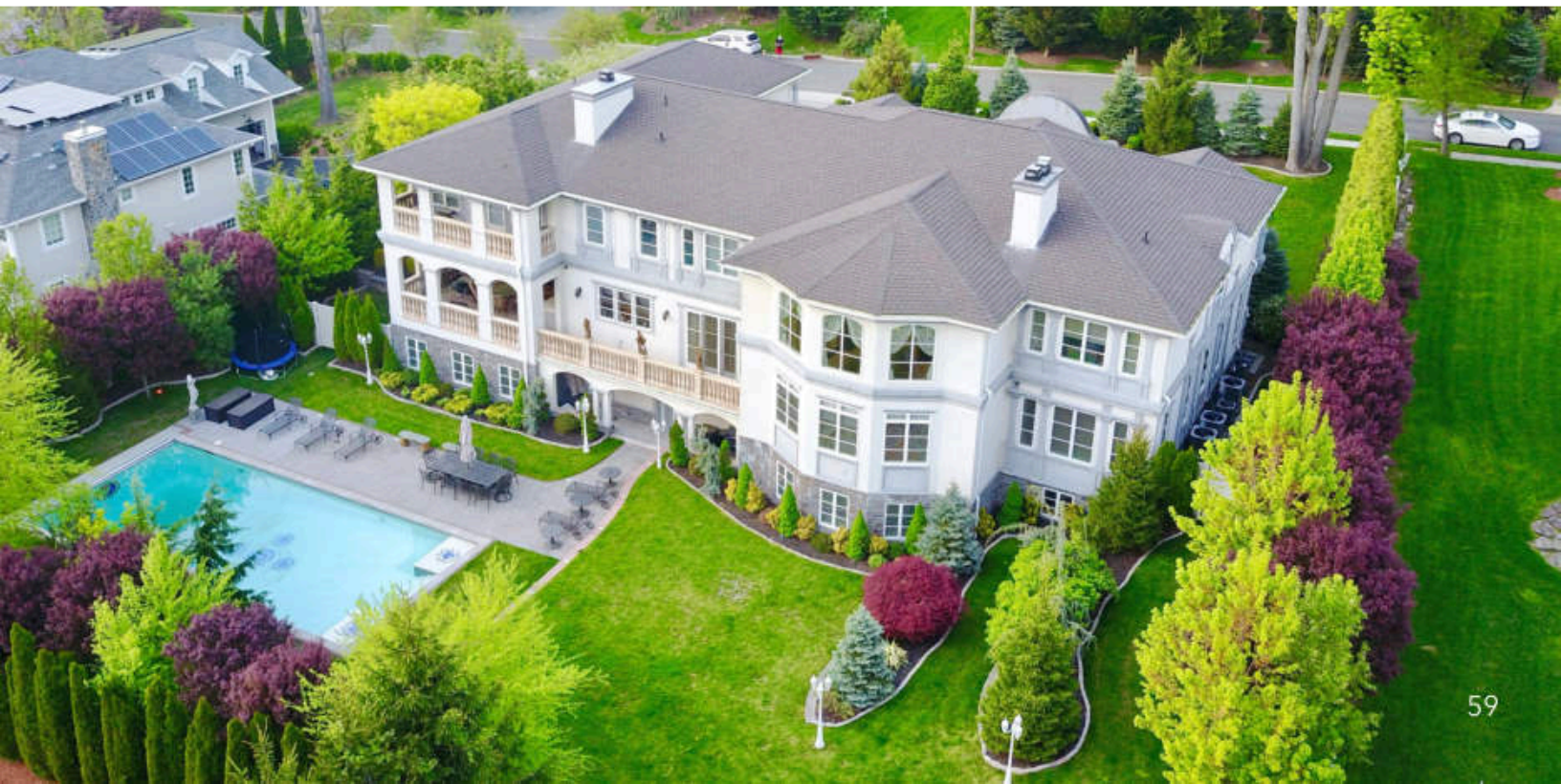


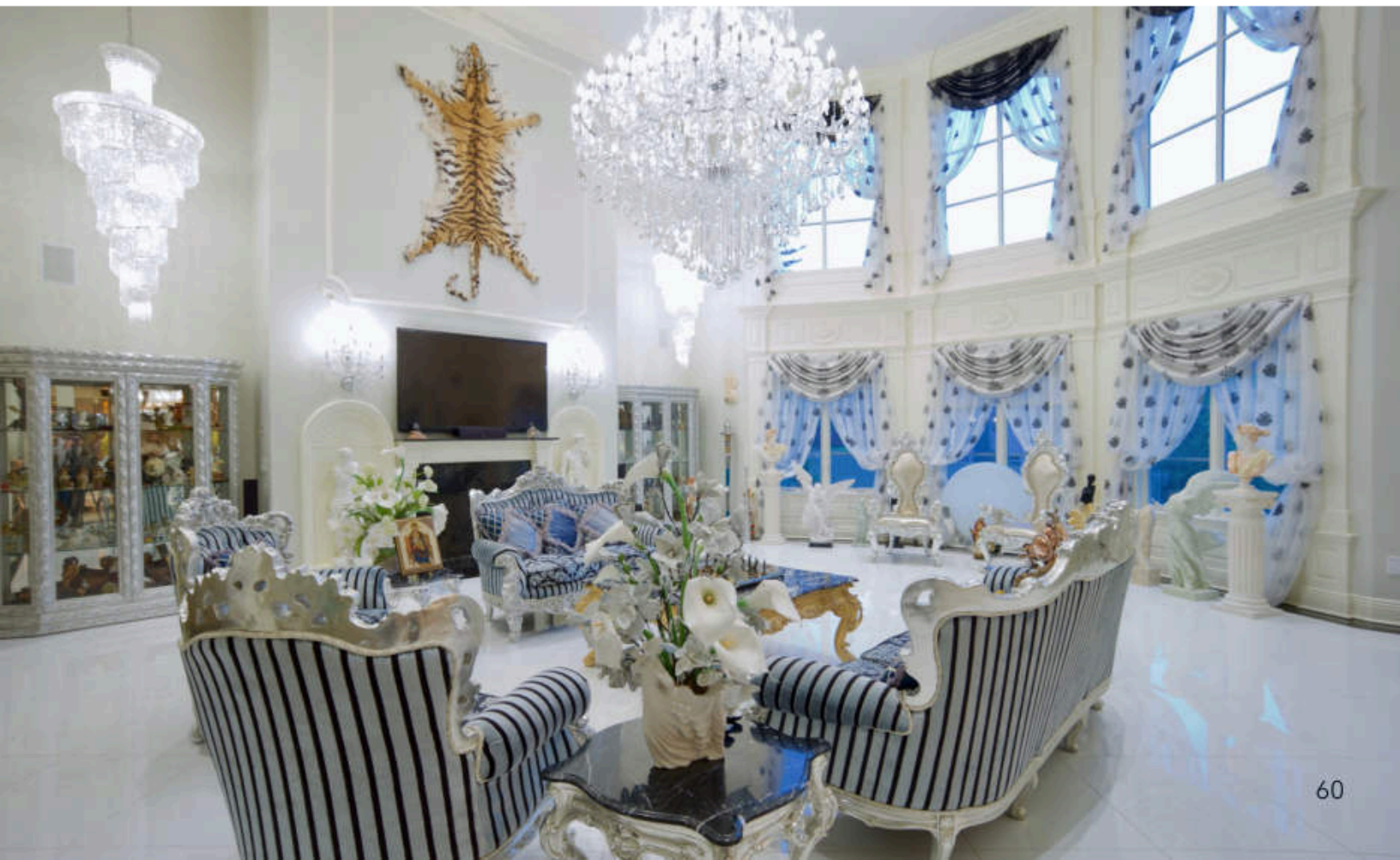




260 Parsells Ln. - A Celebrity Estate with Resort Amenities, and a Private Chapel.

Owned by international pop star Avraam Russo, this stunning 10,000 sq ft East Hill estate in Closter, NJ offers unparalleled craftsmanship and unique character. Beyond the grand 22-foot entrance, bridal staircase, and museum-quality finishes, the home features a fully built private chapel in the lower level—complete with a life-sized crucifix and religious relics, reflecting Russo's deep Catholic faith. The residence includes six en-suite bedrooms, a dream Fendi kitchen with double islands, a luxurious primary suite with private terrace, a pool with waterfall, a full gym, sauna, and multiple entertainment spaces.









199 Vaccaro Dr. - Entertainer's Dream Layout

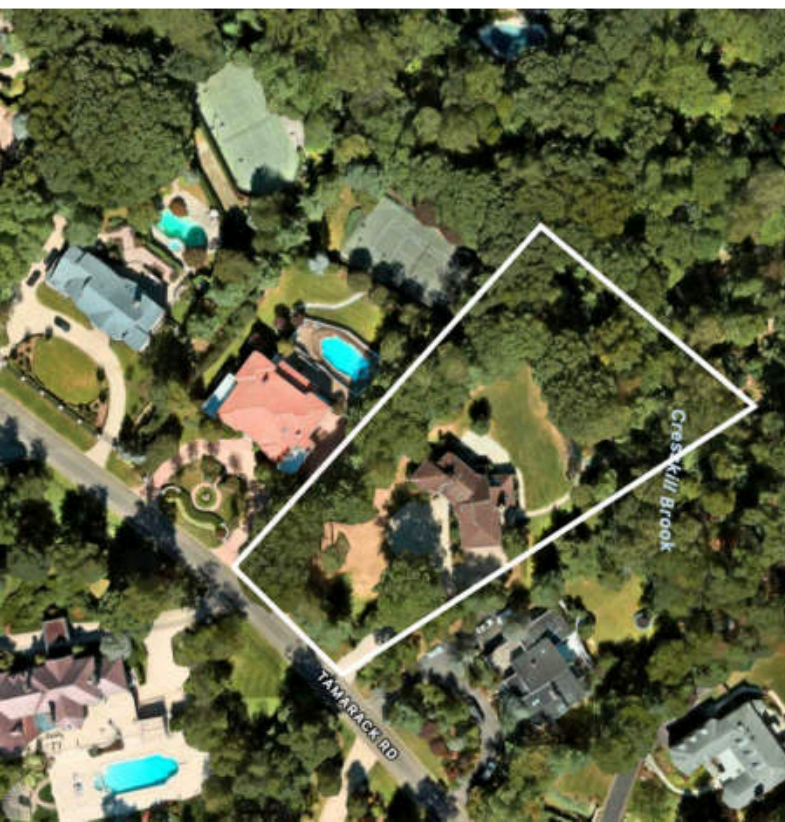
A grand two-story foyer with a stunning wrought iron staircase and expansive windows welcomes you to this 11,000 sq.ft. estate. The open layout features a gourmet mahogany kitchen, dining room, living room with fireplace, powder room, and library. The finished lower level includes a gym, recreation rooms, custom kitchen, and walk-out access to a resort-style backyard with a 5,000 sq.ft. patio, heated gunite pool, and summer kitchen surrounded by lush landscaping.





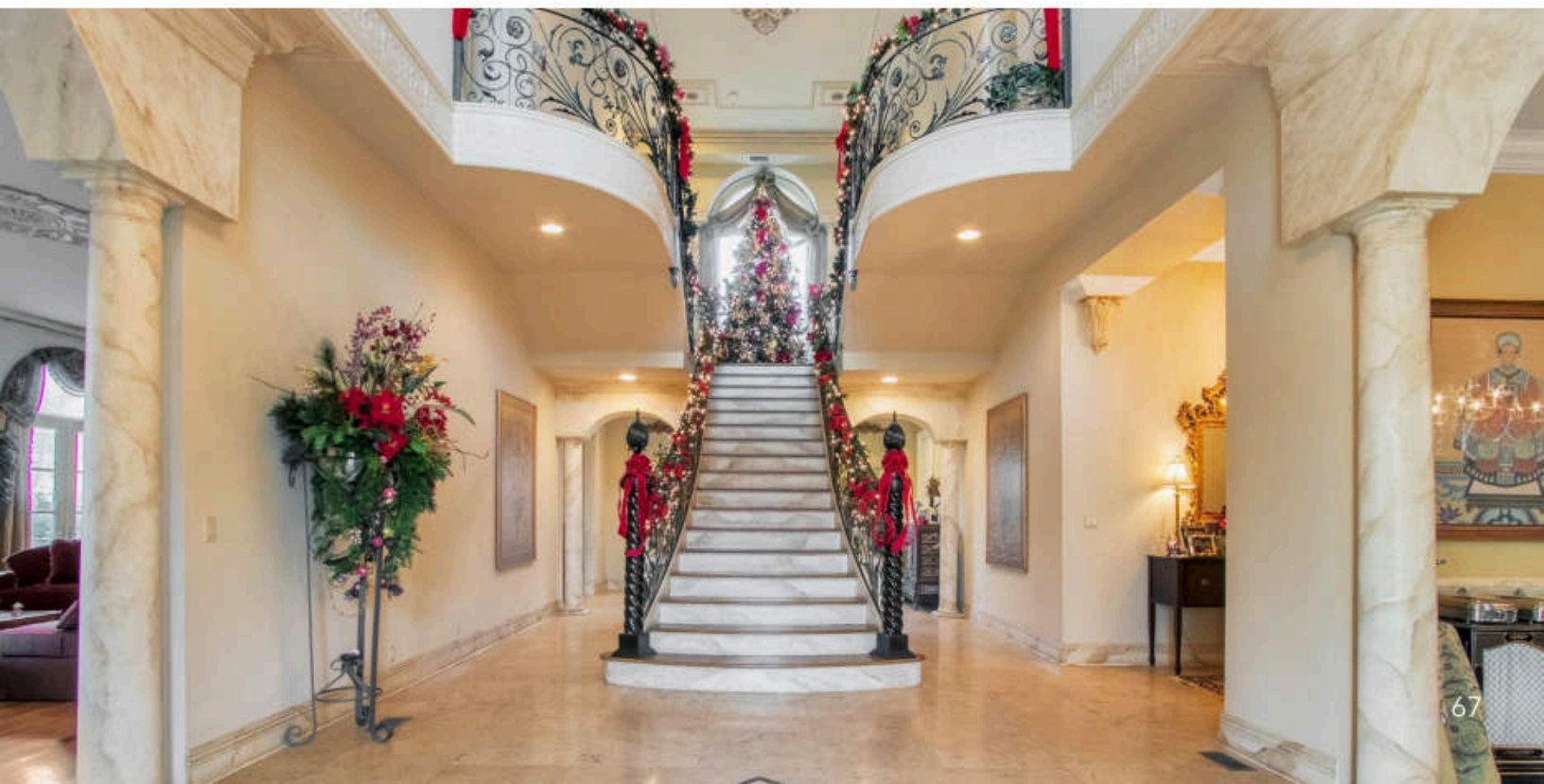
35 Tamarack Rd. - Approved Plans for a 12,000 Sq Ft Masterpiece by Bob Zampolin

35 Tamarack Road in Alpine, NJ, presents a rare opportunity to acquire a prime 1.5-acre parcel in the prestigious Rio Vista neighborhood. This south-facing, mostly flat lot is situated on a quiet double cul-de-sac and uniquely offers a sewer connection—a significant advantage over the typical septic systems in the area. The property includes a contemporary-style home was Designed by B&Co., featuring six bedrooms, eight bathrooms, and a private outdoor pool. While the existing structure requires significant TLC, the offering comes with fully approved engineering, site plans, and zoning for a new 12,000 sq. ft. estate are created by renown architect Bob Zampolin.



28 Buckingham Dr. - A Celebrity Estate with Resort Amenities, and a Private Chapel.

Owned by international pop star Avraam Russo, this stunning 10,000 sq ft East Hill estate in Closter, NJ offers unparalleled craftsmanship and unique character. Beyond the grand 22-foot entrance, bridal staircase, and museum-quality finishes, the home features a fully built private chapel in the lower level—complete with a life-sized crucifix and religious relics, reflecting Russo's deep Catholic faith. The residence includes six en-suite bedrooms, a dream Fendi kitchen with double islands, a luxurious primary suite with private terrace, a pool with waterfall, a full gym, sauna, and multiple entertainment spaces.







205 Vaccaro Rd. - Prime Location with Western Views and Total Privacy

Truly spectacular brick estate offering luxury, comfort, and every modern amenity. This home features a dramatic entrance with a suspended circular staircase, hand-painted ceilings, and exquisite custom woodwork. Highlights include a grand library, soaring ceilings, an elevator to all levels, and detailed custom finishes throughout. The walkout lower level is built for entertaining with a media room, gym, sauna, built-in bar, and second kitchen. Set on a beautifully landscaped flat acre atop the Tamcrest subdivision, the property offers total privacy, a stunning pool with jacuzzi, and breathtaking western views.







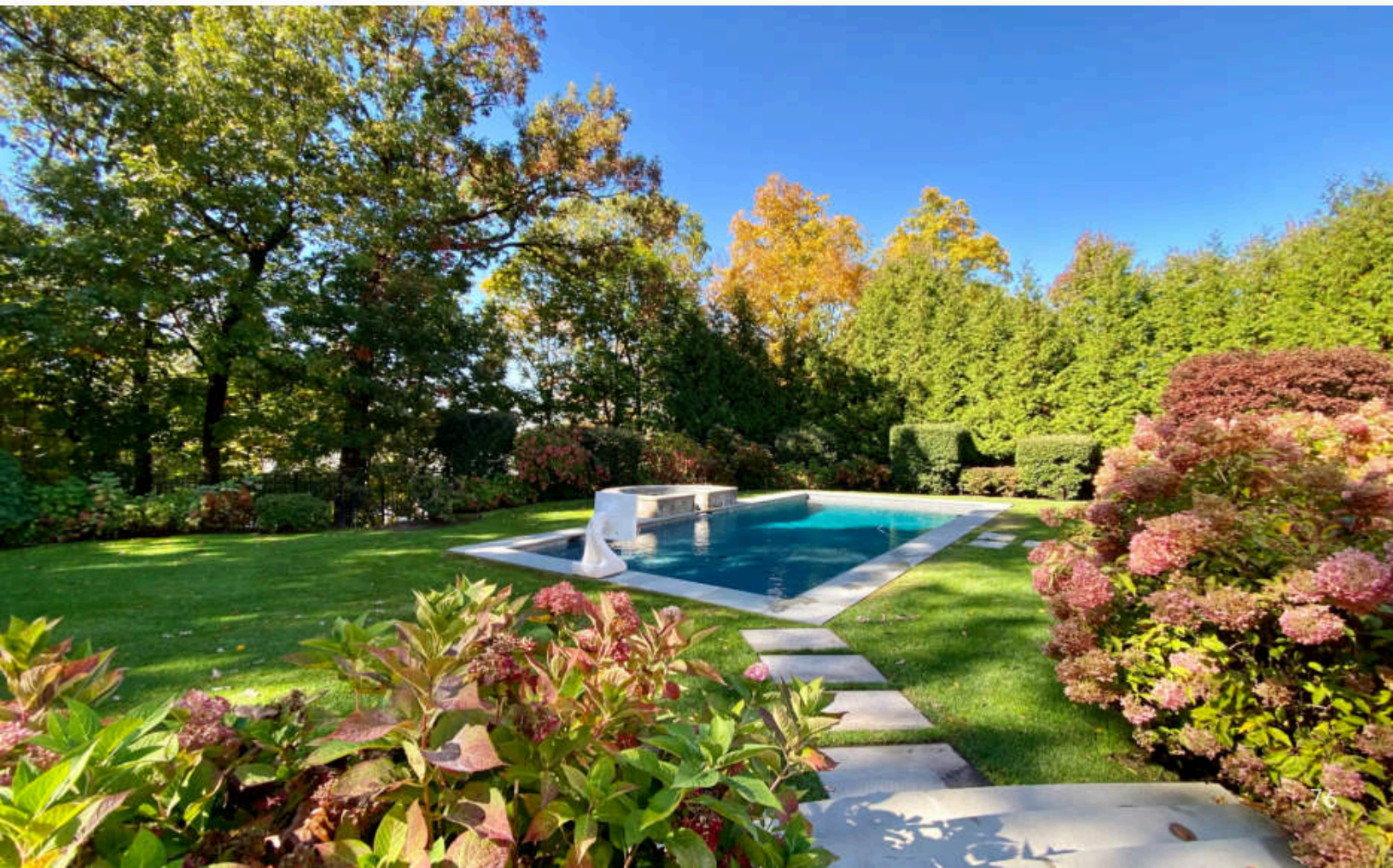


32 Eisenhower Dr. - Elegant Manor with Resort-Style Amenities

Welcome to 32 Eisenhower Drive—a magnificent 6-bedroom, 6.5-bathroom estate is nestled on a private 1.1-acre lot. This 6,057 sq.ft. manor boasts a sunlit two-story foyer with custom ironwork, leading to formal living and dining rooms, each adorned with gas fireplaces. The chef's kitchen features Sub-Zero and Viking appliances, a walk-in wine cellar, and French doors opening to a resort-style backyard complete with a heated gunite pool, jacuzzi, waterfall, and outdoor kitchen. Upstairs, five en-suite bedrooms offer custom closets and a luxurious primary suite with a sitting area and spa-like bath. The finished lower level includes a sauna, recreation room, and full bath.



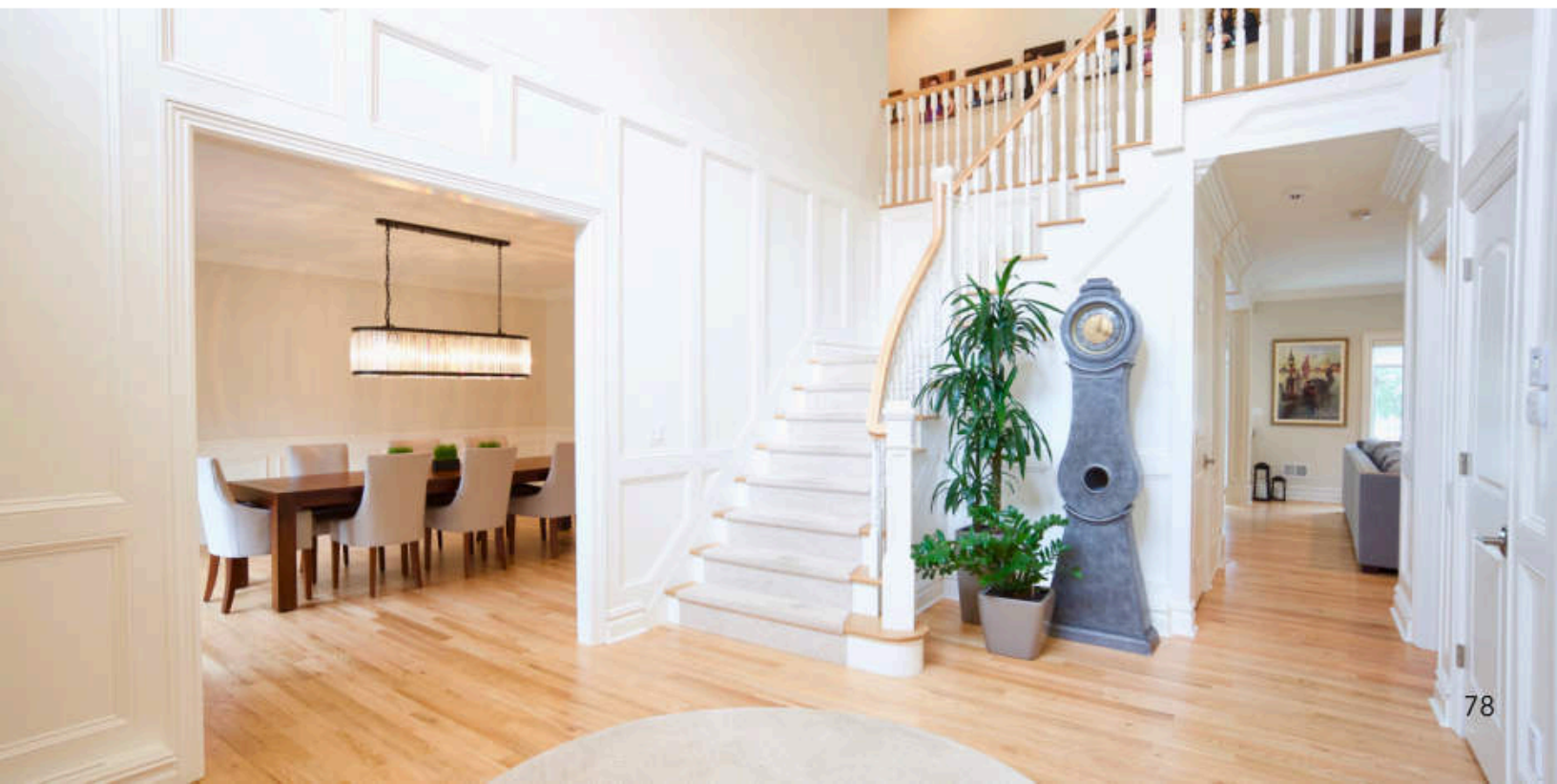




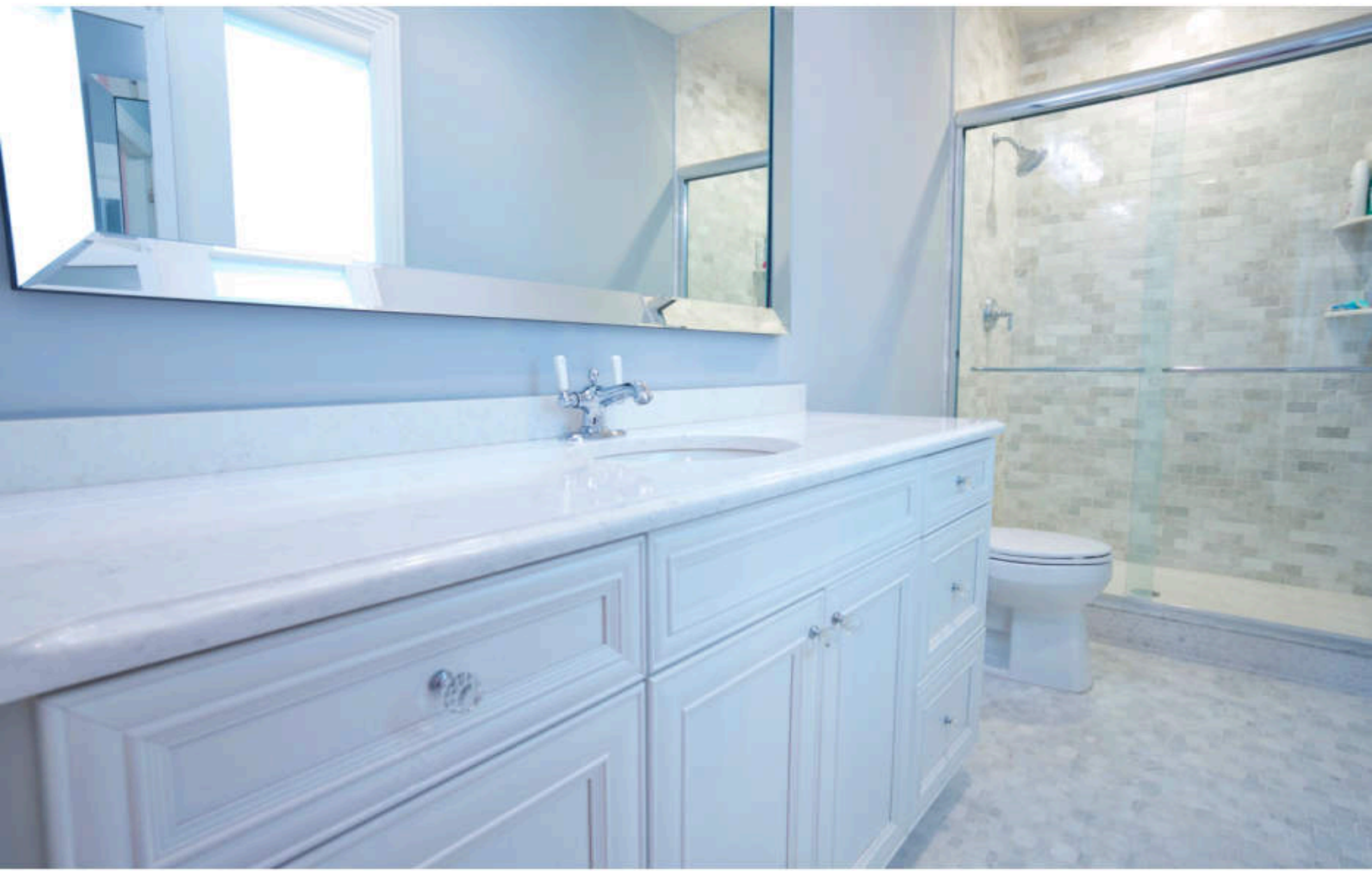


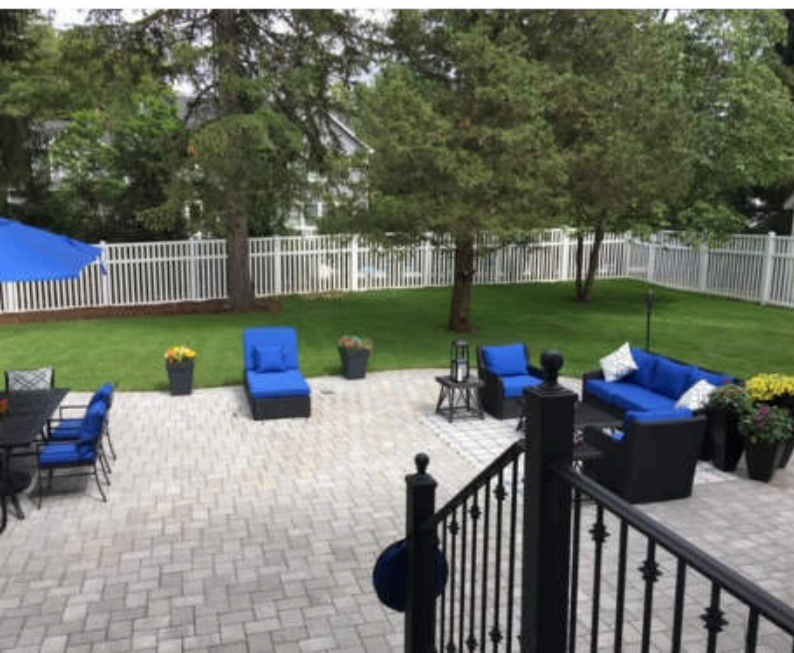
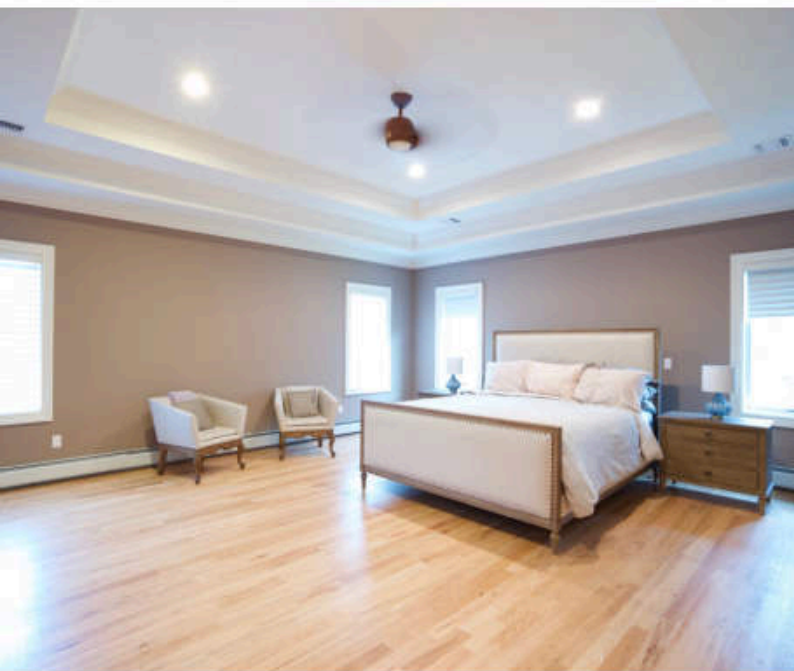
293 Harrison St. - Elegant Hampton-Style Living in the Heart of Haworth

A beautifully crafted custom home blending timeless Hampton-style design with modern luxury. Featuring six bedrooms and seven bathrooms, this residence features soaring ceilings, intricate architectural moldings, and grand living spaces throughout. The main floor boasts a two-story foyer, a gourmet chef's kitchen with a walk-in pantry, a great room, formal living and dining rooms, and a 3-car garage. Upstairs, the primary suite offers spa-like luxury with dual walk-in closets, a freestanding tub, and a steam shower. The flat, oversized backyard is perfect for entertaining and has ample room for a pool.



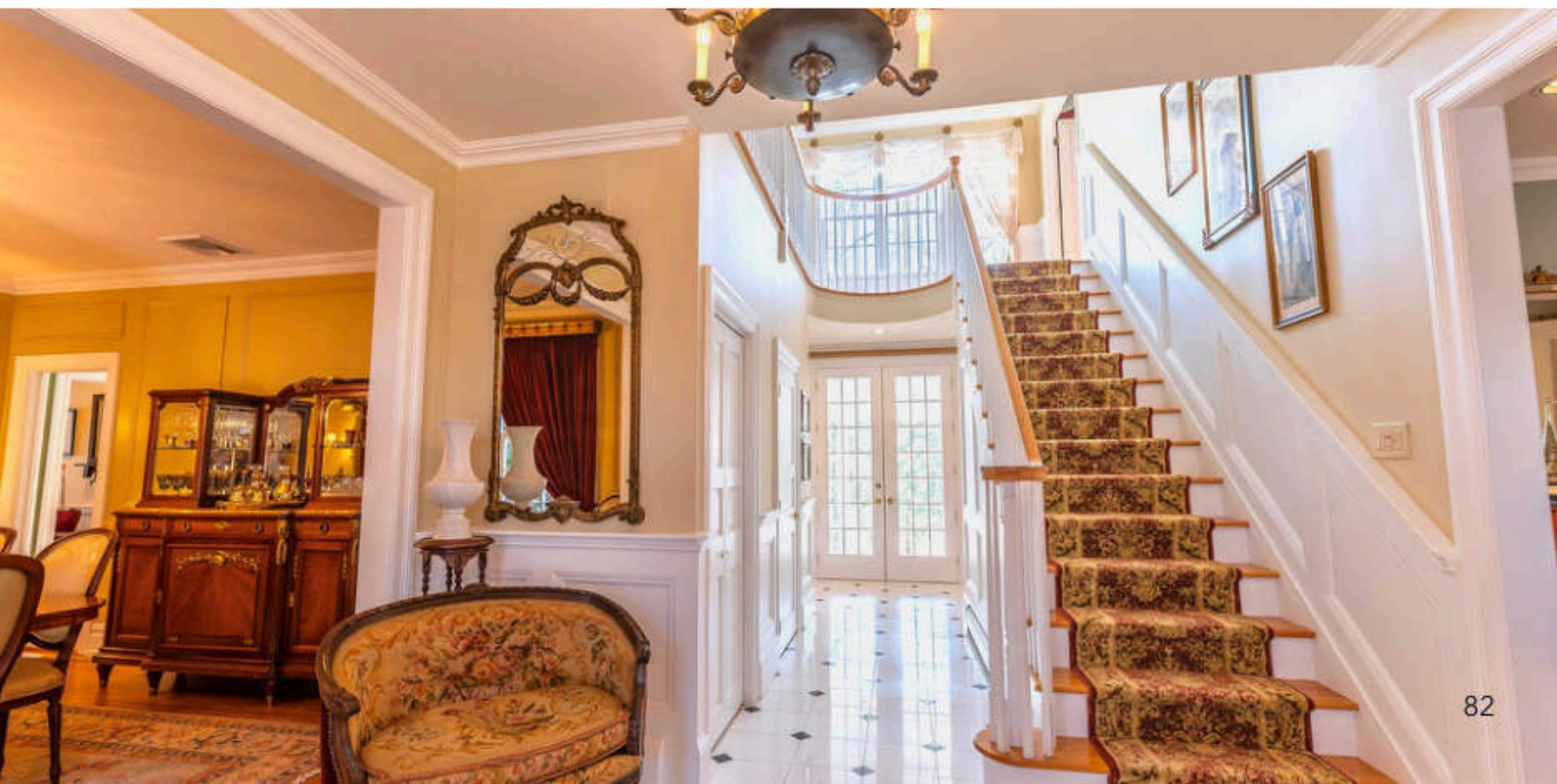


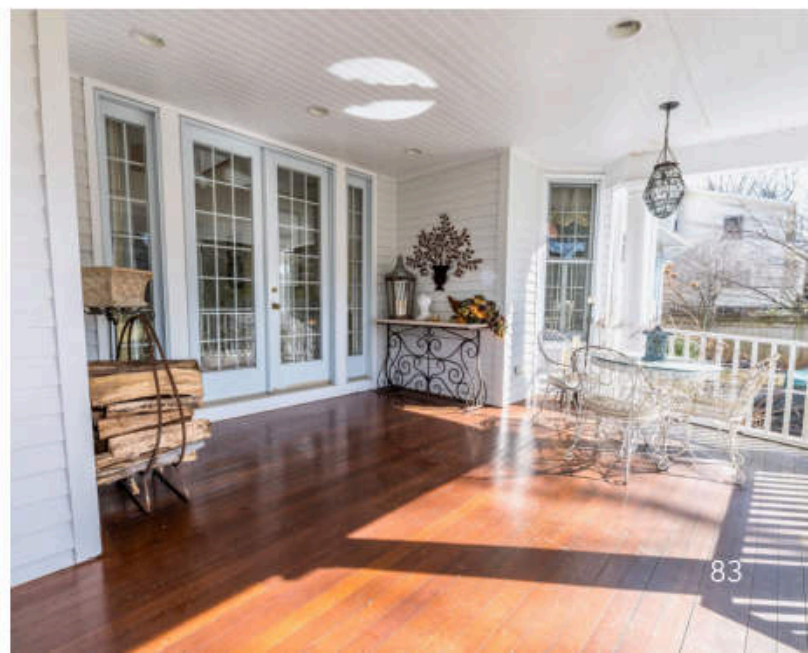
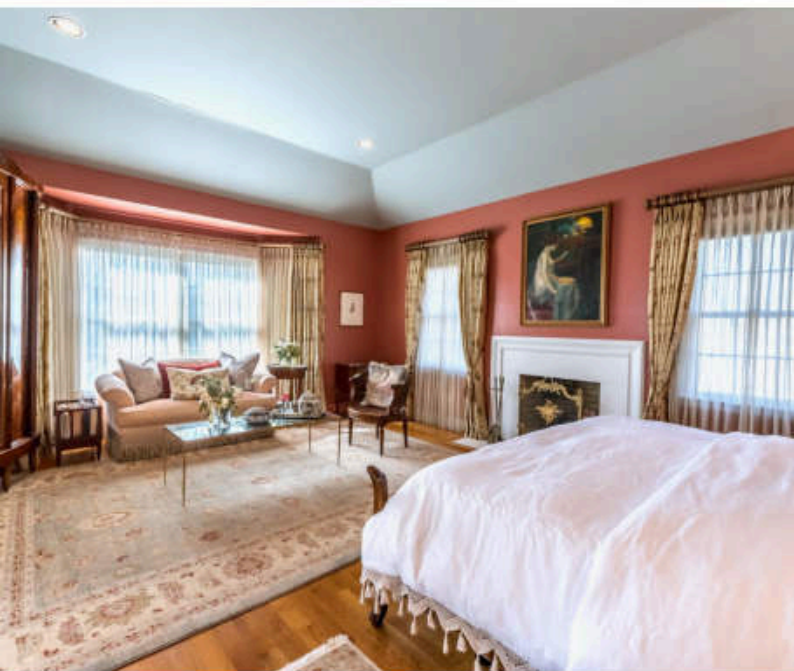




85 Northwood Ave. - Luxury Craftsmanship, Open Spaces, and Room to Grow

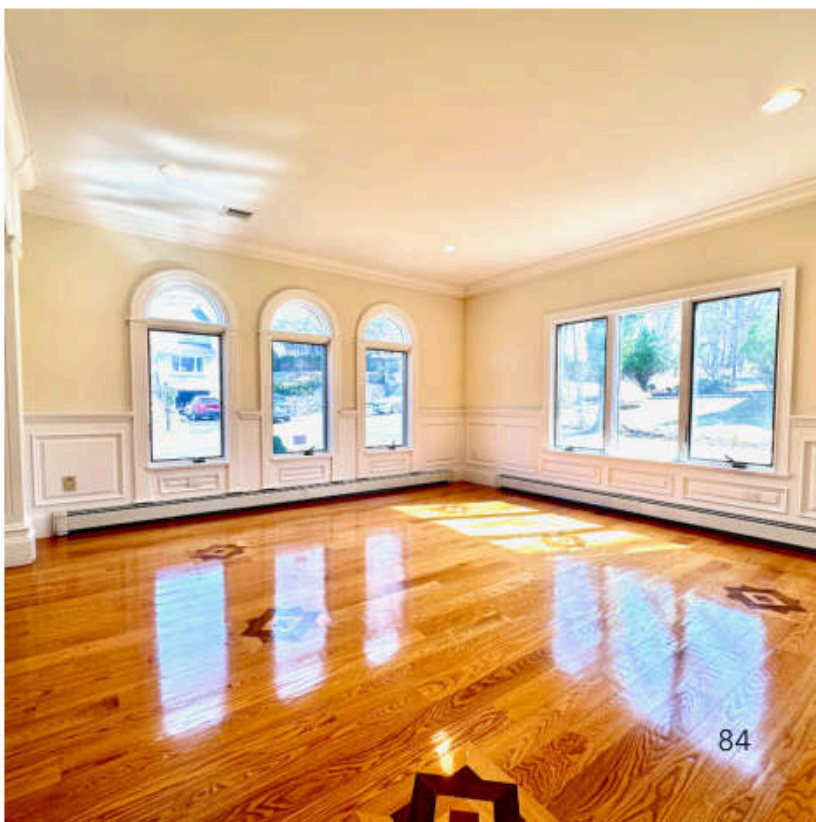
This home offers timeless Hampton-style living with exceptional craftsmanship and attention to detail. This custom-built home features a two-story foyer, spacious living and dining rooms, a gourmet eat-in kitchen with walk-in pantry, and a sunlit great room with built-in bookcases and French doors. Upstairs, the primary suite includes dual walk-in closets and a spa-like bath with a freestanding tub and steam shower. Additional highlights include a finished basement with lounge/gym, a large backyard patio with room for a pool, a whole-footprint attic, a 3-car garage, and full security and sprinkler systems. A rare East Hill offering blending luxury, functionality, and location.





65 Ross Ave. - Elegant Finishes, Spacious Layout, Private Setting

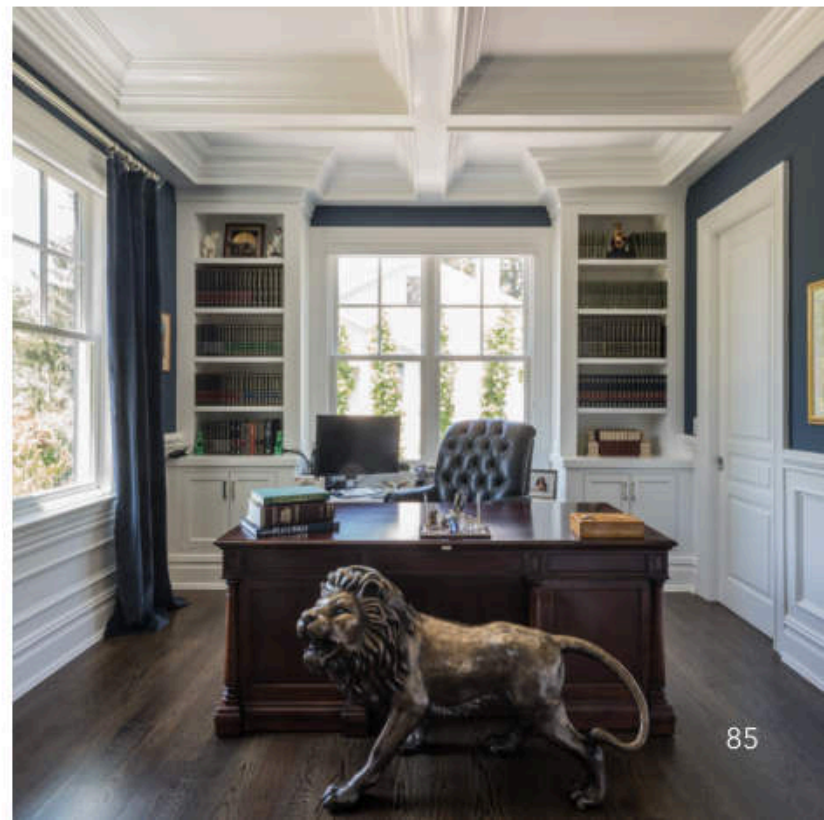
This sun-filled Colonial sits on a private, beautifully landscaped property, featuring a soaring two-story foyer, elegant millwork, and gleaming hardwood floors throughout. The spacious layout includes a formal living and dining room, an impressive great room with double-height ceilings, and a custom chef's kitchen with rich cabinetry, granite countertops, and a large center island. Upstairs, the primary suite features a spa-like bathroom and custom closets.

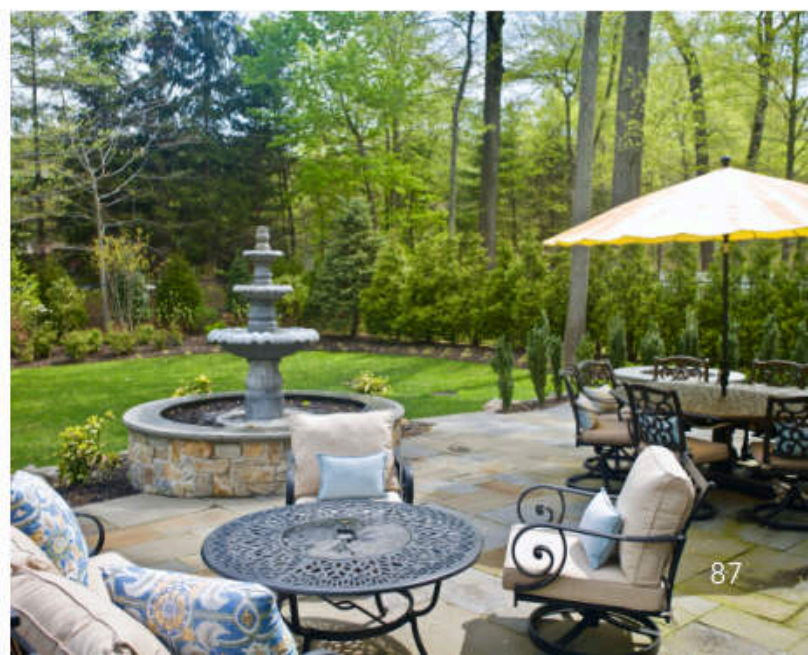
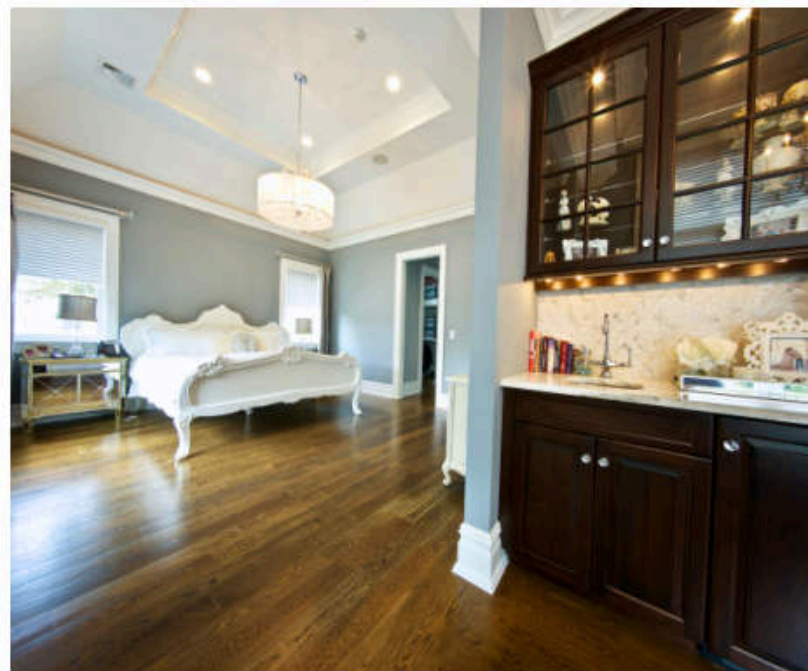




70 Berkery Pl. - Zampolin Architecture in a Prime Location

Custom Zampolin-designed home, built with no expense spared, this sophisticated home blends modern elegance with timeless craftsmanship—featuring a Peter Salerno kitchen with top-of-the-line appliances, wide plank hardwood floors, radiant heat, and Crestron smart automation. The layout is ideal for both grand entertaining and private living, with spacious en-suite bedrooms, a luxurious primary suite, and a fully finished lower level with a theater, wet bar.





BALANCE

Elevating Every Move with Intention.

At B&Co. Realty, we believe that true success in real estate comes from striking the perfect balance – between art and strategy, emotion and logic, innovation and tradition.

Every listing, every relationship, and every transaction is approached with the same philosophy: thoughtful curation, intentional execution, and an unwavering commitment to excellence.

We understand that buying or selling a home isn't just a business decision – it's a life decision. Our role is to make that journey seamless, inspired, and rewarding.

As the market evolves, so do we. Yet our core values remain timeless: integrity, craftsmanship, creativity, and service. By harmonizing these principles, we continue to deliver results that not only meet expectations but redefine them.

At B&Co. Realty, balance isn't just something we achieve – it's the standard we set, every day, for every client.



Contact Us

Luxury
moves fast.
Good thing
we answer
faster.

B&C
REALTY

C: 201-995-3488

E: INFO@BEYDERCO.COM

O: 201-380-2010

10 MCKINLEY ST, SUITE 10,
CLOSTER, NJ 07624

WWW.BEYDERCO.COM



BEYDERCO.COM